

KINVARO

T-Slim lift-up flap fitting for fronts made from wood (inset)



- Flush inset flap fitting for high design requirements and maximum storage space
- Milling depth: cabinet side: 12.2 mm, front: 13.7 mm
- Low opening forces and multi-position stop
- Convenient adjustment of the spring force
- Fast, tool-free clip fitting of the front
- Flap with 3-dimensional adjustment of height ± 2.5 mm, side ± 2.0 mm, depth $+3.0$ mm / -1.0 mm
- 107 degrees opening angle
- Integrated, opening angle reduction clip with optional activation (75°)
- Three different power factors
- Can be used for flaps made from wood
- Cover caps and adapters in Stone, Ice and Silver (all cover caps can be painted)

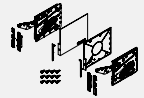
Available in two versions:

- With integrated damping (Soft-close, damper can be switched on/off)
- With integrated automatic opening system (Tipmatic Plus)

ORDER INFORMATION

Kinvaro T-Slim set for flaps made from wood

Set: Fitting (1x left/1x right), front connection (1x left/1x right), cover cap (3x left/3x right), screws (12x)



Power factor (LF)	Soft-close			Tipmatic Plus		
	Stone	Ice	Silver	Stone	Ice	Silver
250 - 550	F151149002	F151149004	F151149003	F151149011	F151149013	F151149012
500 - 1100	F151149005	F151149007	F151149006	F151149014	F151149016	F151149015
1000 - 2250	F151149008	F151149010	F151149009	F151149017	F151149019	F151149018

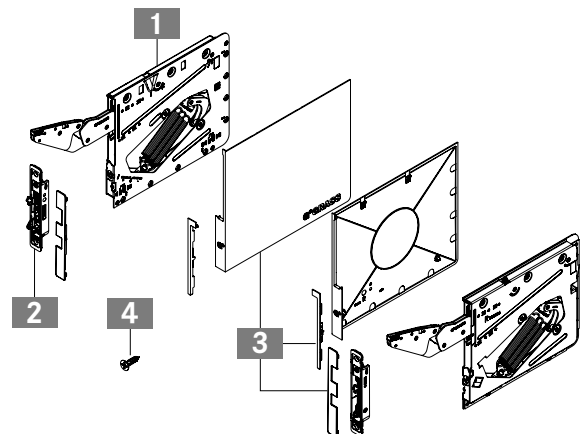
Power factor (LF) = flap height (mm) x (flap weight (kg) + 2 x handle weight (kg))
Cover caps can be painted

Tipmatic Pin see page 60



Kinvaro-T-Slim set consisting of:

- 1 Fitting left and right (1x)
 - 2 Front connection left and right (1x)
 - 3 Cover caps left and right (3x)
 - 4 Screws (12x)
- Installation instructions (1x)



Assembly aids	78
Kinvaro T-Slim adjustment options	62

Individual components	32
-----------------------	----

--	--

ASSEMBLY AND INSTALLATION INSTRUCTIONS

All dimensions in millimetres

Required space

Tipmatic Pin

Side wall milling position

Front milling position

Calculation of power factor (LF)
 Flap height (mm) x {flap weight (kg) + 2 x handle weight (kg)}

CORNICE

REVEAL

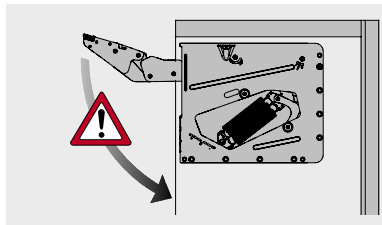
FLAP WEIGHT

Flap thickness (KLS)	Cabinet top panel (KOB)					
	16	18	19	20	22	24
16	67	74	77	80	87	94
18	60	67	70	73	80	87
19	57	64	67	70	77	84
20	54	60	63	67	73	80
21	50	56	60	63	69	76
22	47	53	57	60	66	73
24	40	46	50	53	60	67
26	33	40	43	46	53	60
32	12	19	22	25	32	38
Cornice (KP)						

Flap thickness (KLS)	Front overlay, top (FAO)				
	15	17	19	21	22
16	1	1	1	1	1
18	1	1	1	1	1
19	1	1	1	1	1
20	1	1	1	1	1
21	1	1	1	1	1
22	1	1	1	1	1
24	1.5	1	1	1	1
26	3	2.5	1.5	1	1
32	8	7	6	5.5	5
Reveal (F)					

Flap height (KLH)	Power factor (LF)		
	250 - 550	500 - 1100	1000 - 2250
200	1.3 - 2.8	2.5 - 5.5	5.0 - 11.3
250	1.0 - 2.2	2.0 - 4.4	4.0 - 9.0
300	0.8 - 1.8	1.7 - 3.7	3.3 - 7.5
350	0.7 - 1.6	1.4 - 3.1	2.9 - 6.4
400	0.6 - 1.4	1.3 - 2.8	2.5 - 5.6
450	0.6 - 1.2	1.1 - 2.4	2.2 - 5.0
500	0.5 - 1.1	1.0 - 2.2	2.0 - 4.5
550	0.5 - 1.0	0.9 - 2.0	1.8 - 4.1
Flap weight in kg			

WARNING



Important!
Caution - risk of injury!
Fitting is spring-tensioned!

LEGEND

- F Reveal
- FAO Front overlay, top
- FAS Front overlay, side
- FH Front height
- KB Cabinet width
- KLS Flap thickness
- KOB Cabinet top panel
- KP Cornice
- LF Power factor