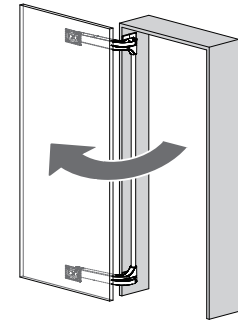


Thank you for selecting our product. Before starting installation, please read this manual thoroughly to ensure correct installation. Please keep this manual at hand for future reference.

**ABOUT THE PRODUCT**

- Can be used for both cabinet and passage doors.
- Easy installation and adjustment.
- Door will be flush with surrounding walls.
- There is no need of embedding a rail on the floor.



**FOR YOUR SAFE WORK AND CORRECT INSTALLATION**

- ⊘ This symbol denotes prohibited actions.
- ⓘ This symbol denotes what must be done.

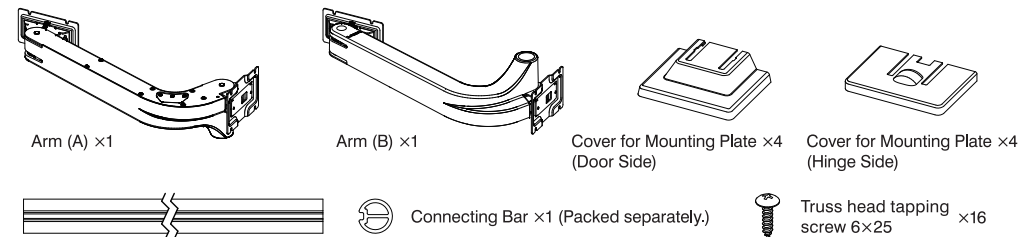
**⚠ WARNING: If these warnings are not followed, it may result in death or serious injury.**

- ⓘ This (lateral swing door system) should be installed by an experienced person who has correct knowledge. If the system is not installed correctly, the door will not operate smoothly, and or may cause injury.
- ⓘ It is necessary to manufacture the frame with sufficient strength so it endures the weight of the door and impact shocks upon opening/closing the door. A frame with poor strength might result in improper and slower movement of the door. In the worst case, the door might drop down and cause injury.
- ⊘ Do not try to use this product for any other purposes other than originally intended for. Do not use the parts for applications that are out of specifications.
- ⊘ Do not disassemble nor modify any parts than those described in this document.
- ⊘ Arms are only designed to hold the door. Do not sit on them or hang anything else than the door.
- ⊘ Do not use excessive force to further open the completely opened door or open/close the door as this could result in malfunction.

**⚠ Caution: If these cautions are not followed, it may result in injury or damage.**

- ⓘ This lateral swing door system is a part for furniture or architectural fittings. After installation, make sure to test the finished product thoroughly to ensure that it is well-functioning and safe.
- ⓘ Make sure to follow the designated measurements and specifications as well as horizontal and verticals angles. Make sure that the frame is not warped, since it may affect the movement of the door.
- ⓘ The company is conducting strict checks on the products. However, if any defects are found on the product, contact the retailer.
- ⓘ When cleaning heavy soiling, wipe off with neutral detergent diluted with water.
- ⓘ Make sure to test the screws for slack at regular intervals (one month from first usage, half year and then one time every year is recommended).

**COMPONENT PARTS**



- Tools needed for assembly (Please prepare \* when in installing on aluminum frame.)
- Screwdriver(+) No.3 · Screwdriver(+) No.2 · Hex key 4mm \* Aluminum frame 40x160
  - \* Screw (M6x12) & Nut x 8 set \* Aluminum frame fixing angle, including fixing screws and nuts. \* Hex key 5mm

**SUGATSUNE KOGYO CO.,LTD**  
Tokyo, JAPAN  
Phone: +81 (0)3 3866 2260 E-mail:export@sugatsune.co.jp

**SUGATSUNE SHANGHAI Co., LTD**  
Shanghai, CHINA  
Phone: +86 21 3632 1858 E-mail:lamp@sugatsune.com.cn

**SUGATSUNE AMERICA, INC**  
California, USA  
Phone: +1 310 329 6373 E-mail:sales@sugatsune.com

**SUGATSUNE KOGYO (UK) LTD**  
Reading, UK  
Phone: +44 118 9272 955 E-mail:sales@sugatsune.co.uk

**SUGATSUNE KOGYO INDIA PRIVATE LIMITED**  
Mumbai, INDIA  
Phone: +91 22 26314490/91 E-mail:sales@sugatsune.in

**SUGATSUNE CANADA, INC.**  
Mumbai, INDIA  
Phone: +1 514 312 5267 E-mail:support@sugatsune.ca

ISO9001(Japan Offices and Sugatsune America) and ISO14001(Chiba Production division and Logistics center), certified. 2017.04 1030-3

## SPECIFICATIONS

Door Width	750 ~ 1070 mm *1	Door Thickness	24 ~ 40 mm
Door Height	Max.2980 mm	Door Weight	Max.90 kg/Door
Temperature of use	0 ~ 40 °C		

\*1 Dimensions for a full opening of the cabinet.

① Handle should be installed within the range below.

Table 1: Handle position area [mm]

Door width	Clearance C		
	10	15	20
750 ~ 900	Max. 300	Max. 350	Max. 500
900 ~ 1000	Max. 200	Max. 250	Max. 400
1000 ~ 1100	Max. 100	Max. 150	Max. 300

※Door Thickness : 40mm  
 ※Handle position area is centred on the door width.

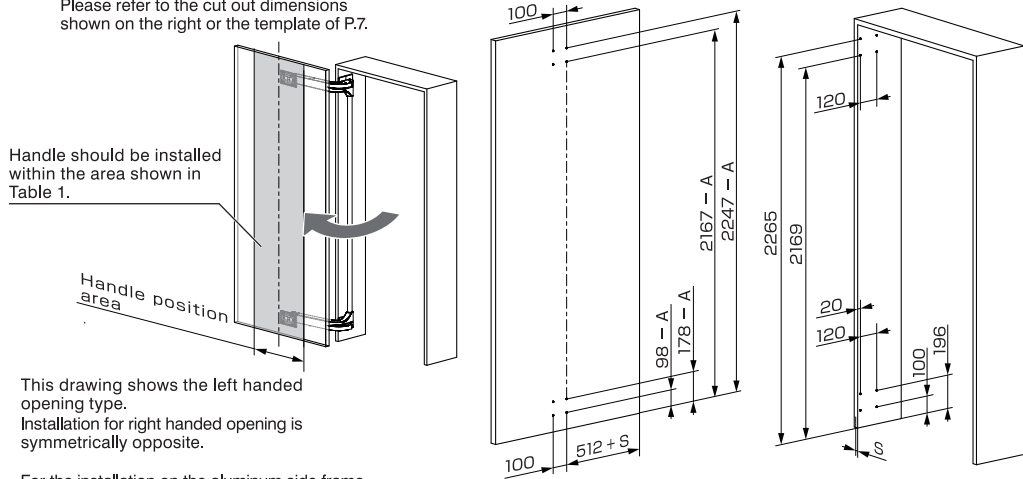
● For wood frame installation, please refer to **1 ~ 8**.

● For aluminum frame installation, please refer to **1 ~ 2** and **9 ~ 13**.

## 1 Hole drilling

Please refer to the cut out dimensions shown on the right or the template of P.7.

Handle should be installed within the area shown in Table 1.



\*The drawing below takes into consideration a 10mm clearance between the floor and the door.

This drawing shows the left handed opening type. Installation for right handed opening is symmetrically opposite.

For the installation on the aluminum side frame, please refer only to the door side.

① The table below shows the adjustment factor A depending on the door weight. Ensure that you adjust according to your door weight.

Door weight	Adjustment factor A	Door weight	Adjustment factor A	Door weight	Adjustment factor A
20 kg	2 mm	50 kg	6.5 mm	80 kg	11 mm
30 kg	3.5 mm	60 kg	8 mm	90 kg	12.5 mm
40 kg	5 mm	70 kg	9.5 mm		

• If you use a thick carpet, ensure that there is enough clearance for free movement of the door.

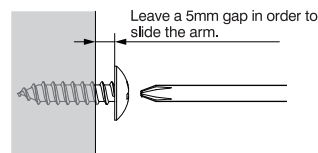
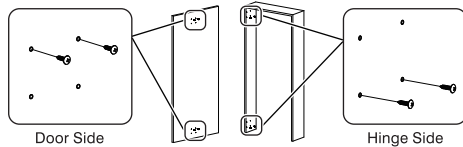
• A ±7mm height adjustment is possible after installation. Please refer to P.4 **7**.

## 2 Pre-installation

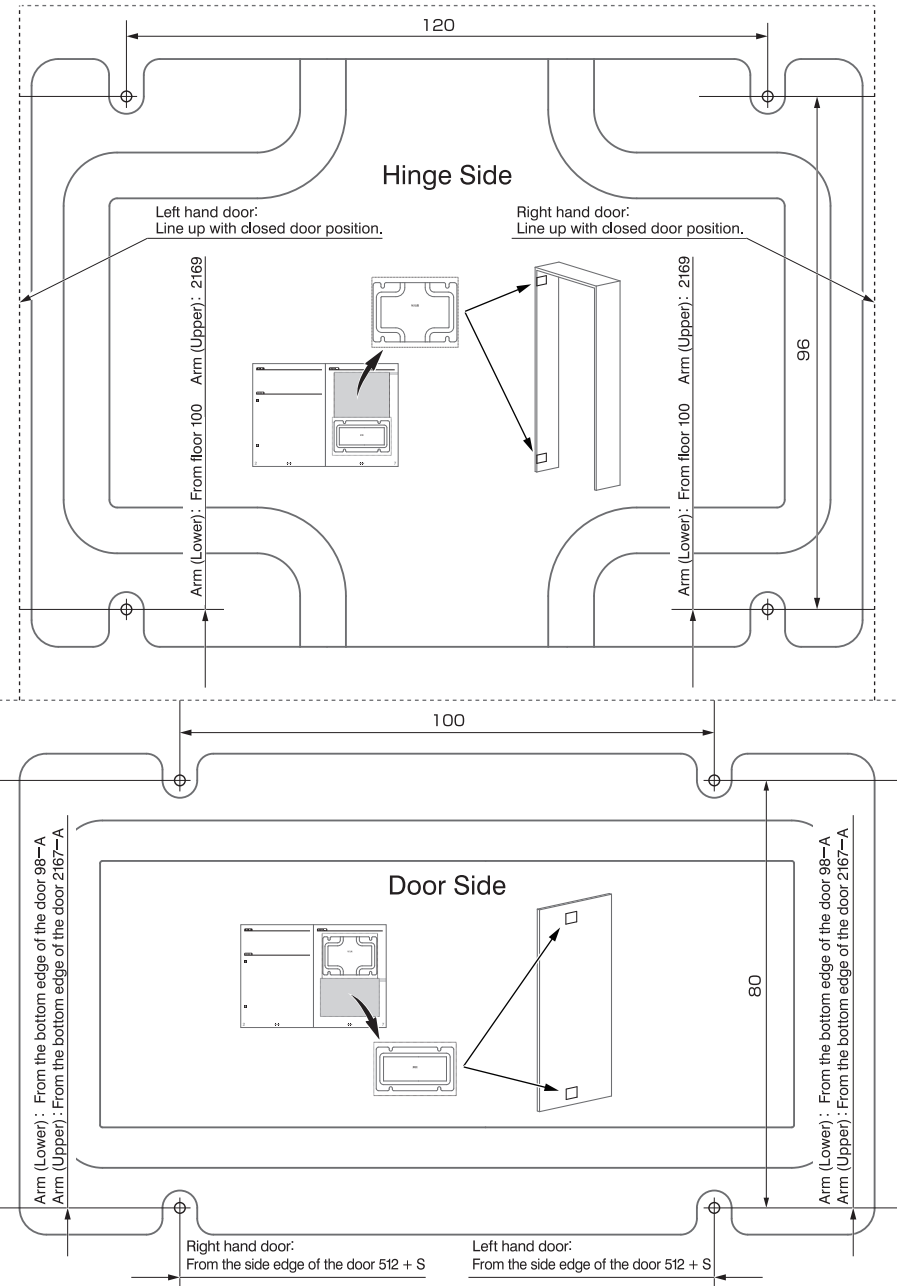
Pre-fix the 4 lower screws ( 2 for top and 2 for bottom arm) on the hinge side, and 4 upper screws on the door side,

using the truss tapping 6x25 screws provided.

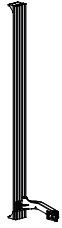
\* For the installation on the aluminum side board, please refer only to the door side.



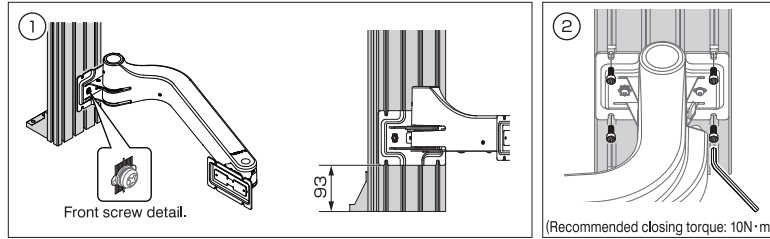
## TEMPLATE



### 10 MOUNTING ARM (LOWER)

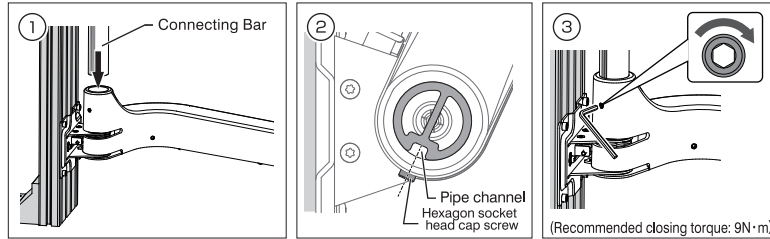


**! Caution**  
Do not loosen or fasten the screw with hex-hole on the arm.



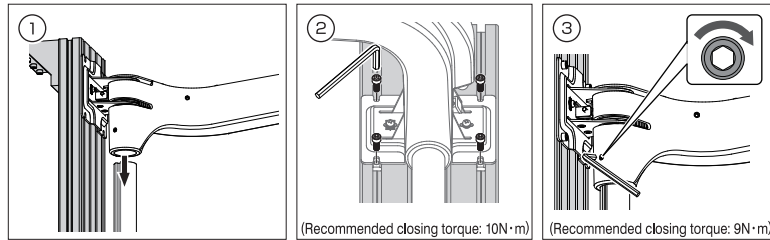
(Recommended closing torque: 10N·m)  
\* Screw (M6×12) not included.

### 11 INSTALLATION OF CONNECTING BAR



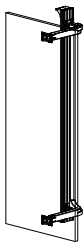
(Recommended closing torque: 9N·m)

### 12 MOUNTING ARM (UPPER)

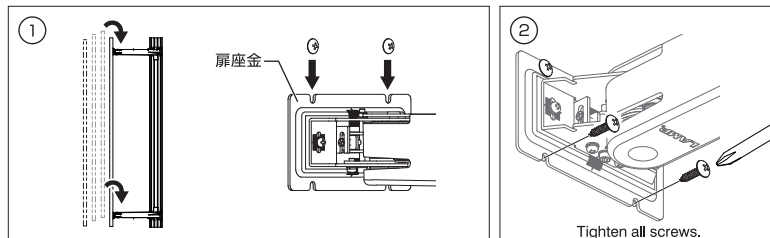


\* Screw (M6×12) not included.

### 13 INSTALLING DOOR



**! WARNING**  
We recommend that 2 people install the door in order to reduce risks of injury and damage to the door.

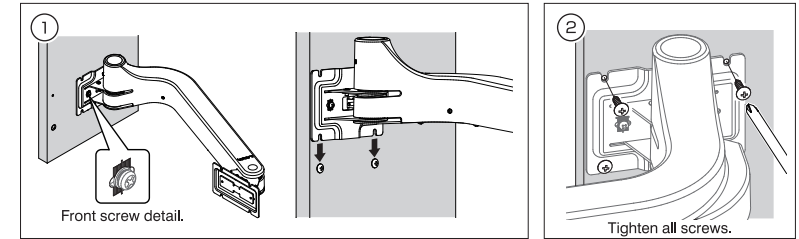


● For the adjustment and installation of the cover, please refer to **7** and **8**.

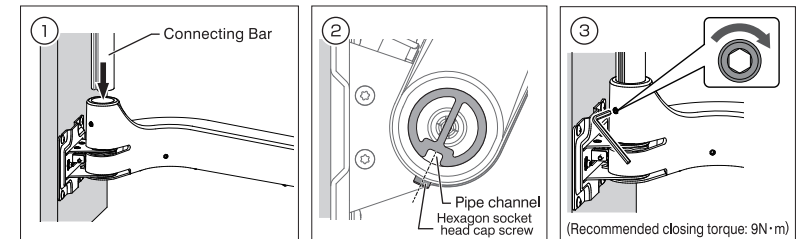
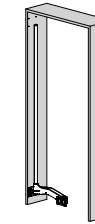
### 3 MOUNTING ARM (LOWER)



**! Caution**  
Do not loosen or fasten the screw with hex-hole on the arm.

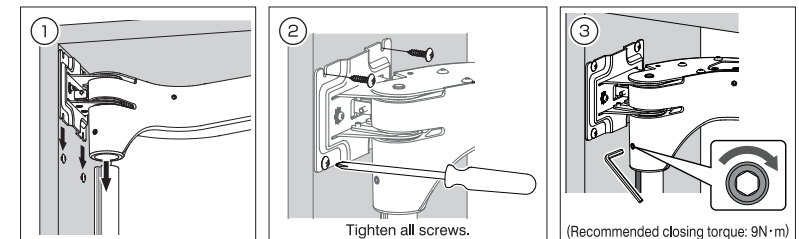
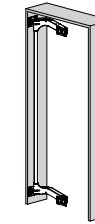


### 4 INSTALLATION OF CONNECTING BAR



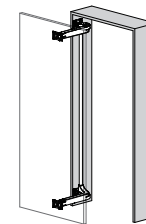
(Recommended closing torque: 9N·m)

### 5 MOUNTING ARM (UPPER)

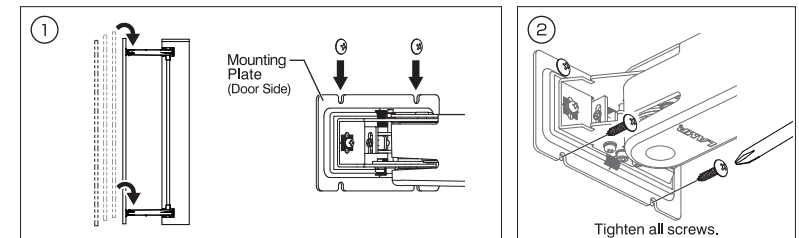


(Recommended closing torque: 9N·m)

### 6 INSTALLING DOOR



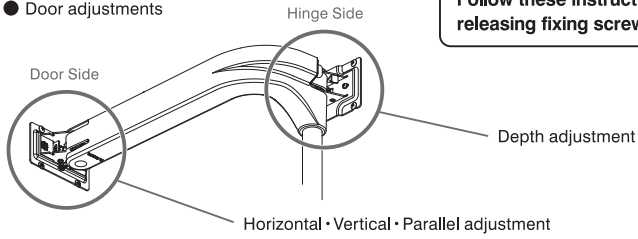
**! WARNING**  
We recommend that 2 people install the door in order to reduce risks of injury and damage to the door.



Tighten all screws.

# 7 ADJUSTMENTS

## ● Door adjustments



**Caution**  
Follow these instructions carefully as trying to adjust without releasing fixing screws first might damage the product.

<p><b>Horizontal adjustment</b> ±7 [mm]</p>	<p>① loosen. ③ fasten.</p> <p>Fixing screws</p> <p>② Adjust both arms similarly in order to move the door left or right.</p> <p>Horizontal adjustment screw</p>
<p><b>Vertical adjustment</b> ±7 [mm]</p>	<p>① loosen. ③ fasten.</p> <p>Fixing screws</p> <p>② Adjust both arms vertically by the same amount in order to keep the load even on both arms.</p> <p>Vertical adjustment screw</p>
<p><b>Parallel adjustment</b> ±3 [°]</p>	<p>① loosen. ③ fasten.</p> <p>Parallel adjustment screw</p> <p>② Adjust the angle of the door to make it flat against the cabinet.</p>
<p><b>Depth adjustment</b> ±5 [mm]</p>	<p>① loosen. ③ fasten.</p> <p>Fixing screws</p> <p>② Adjust the depth of the door position by screwing the depth adjusting screw.</p> <p>Depth adjustment screw</p>

(Recommended closing torque: 2 N · m)

## ● Setting of Damper Force (Adjust the door closing speed)

**Changing the dampers**

① Remove the damper holder.  
② Select the dampers as per your application.  
③ Insert the damper holder.

Holder	Damper	Damper Force				
		Default	4	3	2	1
Arm(Upper)	strong	●	●	●	●	●
	weak	●	●	●	●	●
Arm(Lower)	strong	●	●	●	●	●
	weak	●	●	●	●	●

② Select the dampers as per your application.  
\* Ensure that the dampers are inserted in the direction shown on the left.

Damper (strong)  
Damper (weak)

# 8 INSTALL THE COVER FOR MOUNTING PLATE

**Cover for Mounting Plate (Door Side)**

**Cover for Mounting Plate (Hinge Side)**

Bracket

Clips

Plate

Clips

Ensure correct alignment.

Insert and fit into the plate.

## ALUMINUM FRAME SIDE BOARD

# 9 INSTALL ON THE ALUMINUM FRAME

**Aluminum Frame Dimensions**

**Fix the aluminum frame**

Ceiling

Floor

**Door Specification**

Width	750~1100mm	Thickness	24~40mm
Height	2400~2980mm	Weight	20~90kg

**Remarks**

- In order to avoid hinge side contact between the door and frame, please ensure that handle position, width, as well as hinge side clearance are set as shown in the table 1.
- Handle should be positioned within the range of Table 1.

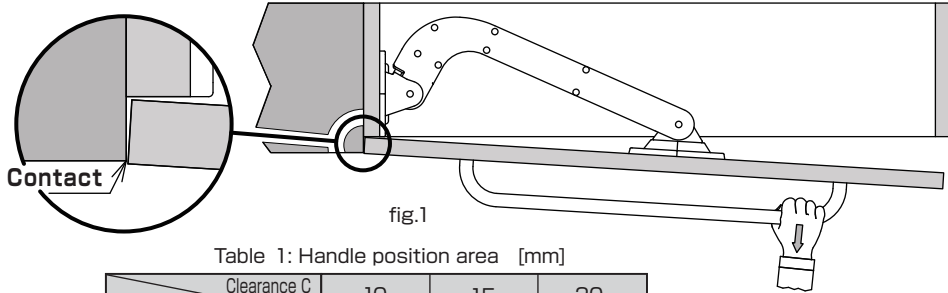


Table 1: Handle position area [mm]

Door width	Clearance C	10	15	20
750 ~ 900		Max. 300	Max. 350	Max. 500
900 ~ 1000		Max. 200	Max. 250	Max. 400
1000 ~ 1100		Max. 100	Max. 150	Max. 300

※Door Thickness : 40mm  
※Handle position area is centred on the door width.

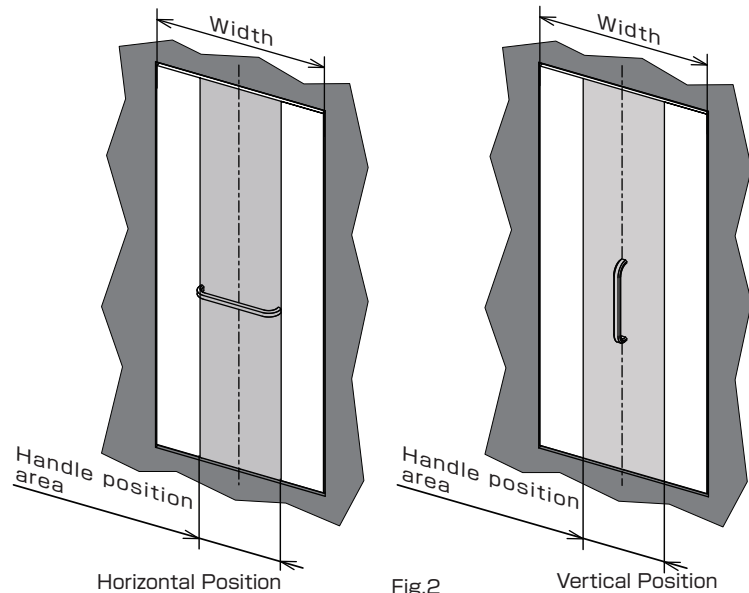


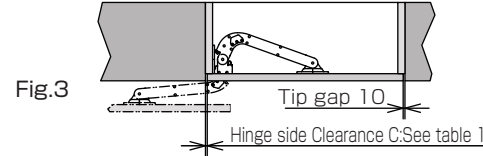
Fig.2



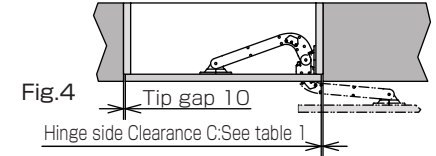
**Opening Variation**

Opening Variation shown below. Hinge side joint (refer to chart 1) and Tip side joint(10mm) required.

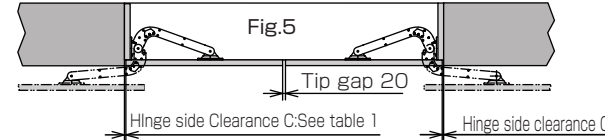
● Left Handet Opening



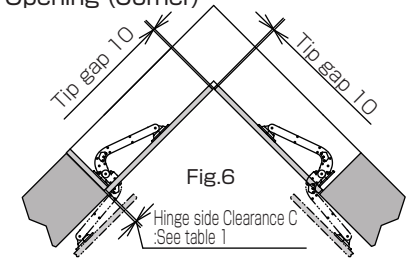
● Right Handet Opening



● Double Opening



● Double Opening (Corner)



For other cases, please contact our sales.

**Frame(Box) and Door Preparation**

- Frame (Box) and Door should be free from warpage and should be prepared square.
- Frame (Box) should be fixed firmly.
- The LIN-X1000 hinge is designed to support doors of up to 90kg. Ensure that the frame is sturdy enough to support the full load of the LIN-X1000 and door. Alternatively, we recommend the use of the 120mm pitch aluminum frame (sold separately) to ensure proper and safe movement.

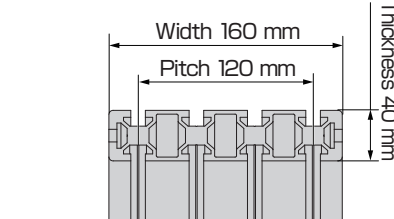
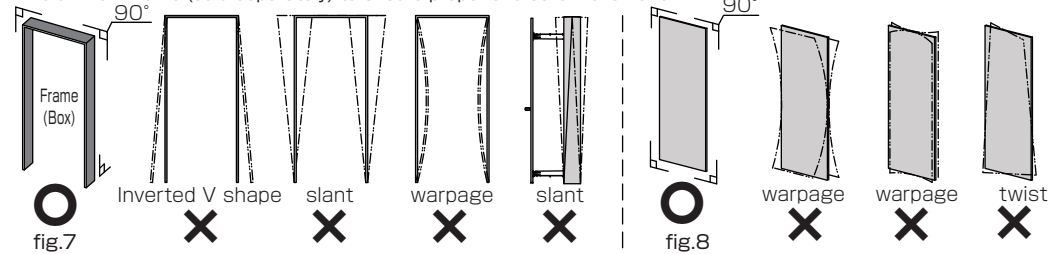


Fig.9 Aluminum frame dimensions

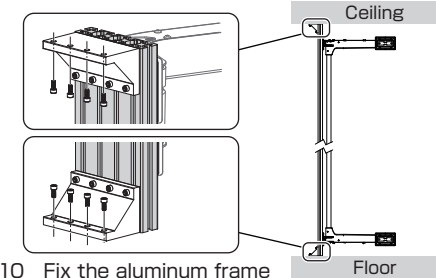


Fig.10 Fix the aluminum frame

**Handle design and width condition**

- In case installing the handle horizontally, refer to chart 1.



Fig.11