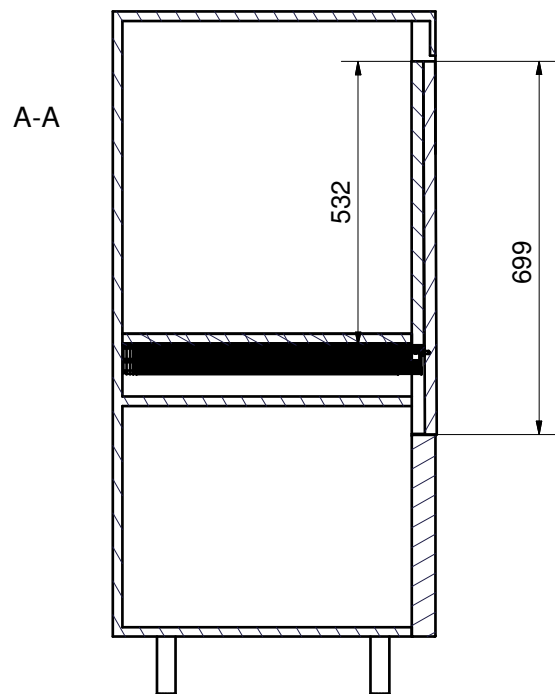
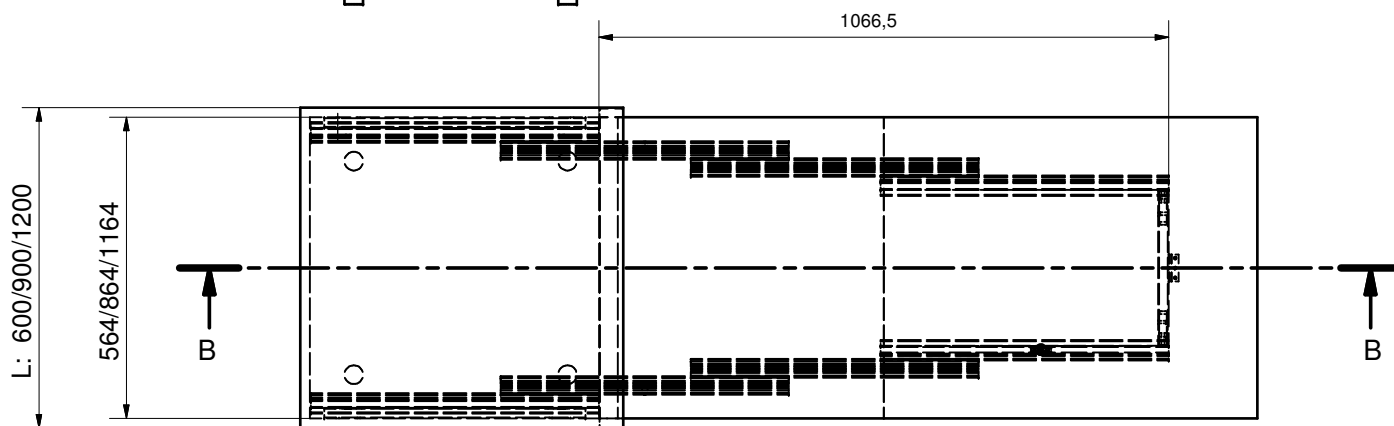
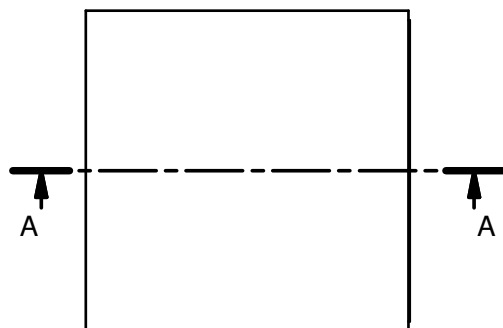
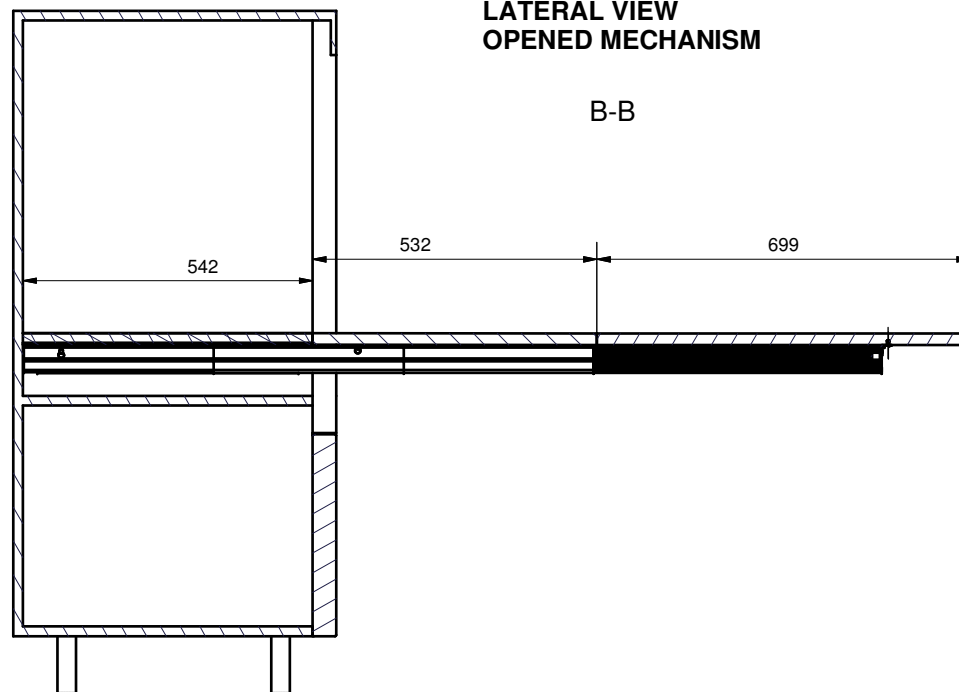


LATERAL VIEW
CLOSED MECHANISM



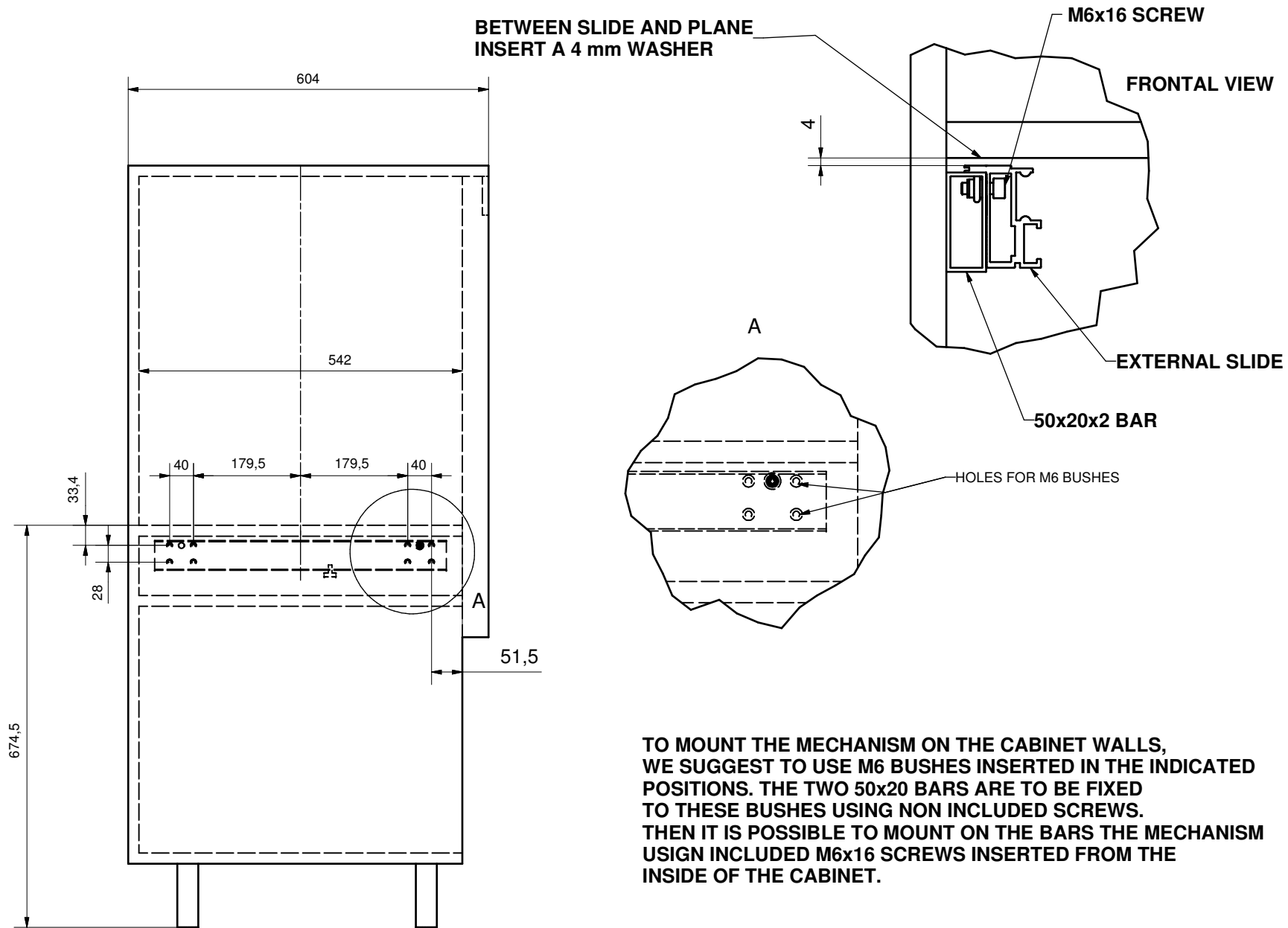
LATERAL VIEW
OPENED MECHANISM



TOP VIEW

ASSEMBLY INSTRUCTION

L = CABINET WIDTH
THICKNESS mm 18.

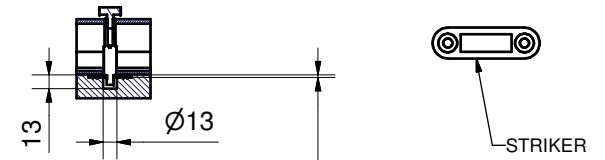


**TO MOUNT THE MECHANISM ON THE CABINET WALLS,
WE SUGGEST TO USE M6 BUSHES INSERTED IN THE INDICATED
POSITIONS. THE TWO 50x20 BARS ARE TO BE FIXED
TO THESE BUSHES USING NON INCLUDED SCREWS.
THEN IT IS POSSIBLE TO MOUNT ON THE BARS THE MECHANISM
USING INCLUDED M6x16 SCREWS INSERTED FROM THE
INSIDE OF THE CABINET.**

**THE HOLES POSITIONS HERE INDICATED ARE ONLY
AN EXAMPLE.
DIFFERENT CONFIGURATIONS CAN BE OBTAINED IF
NEEDED.**

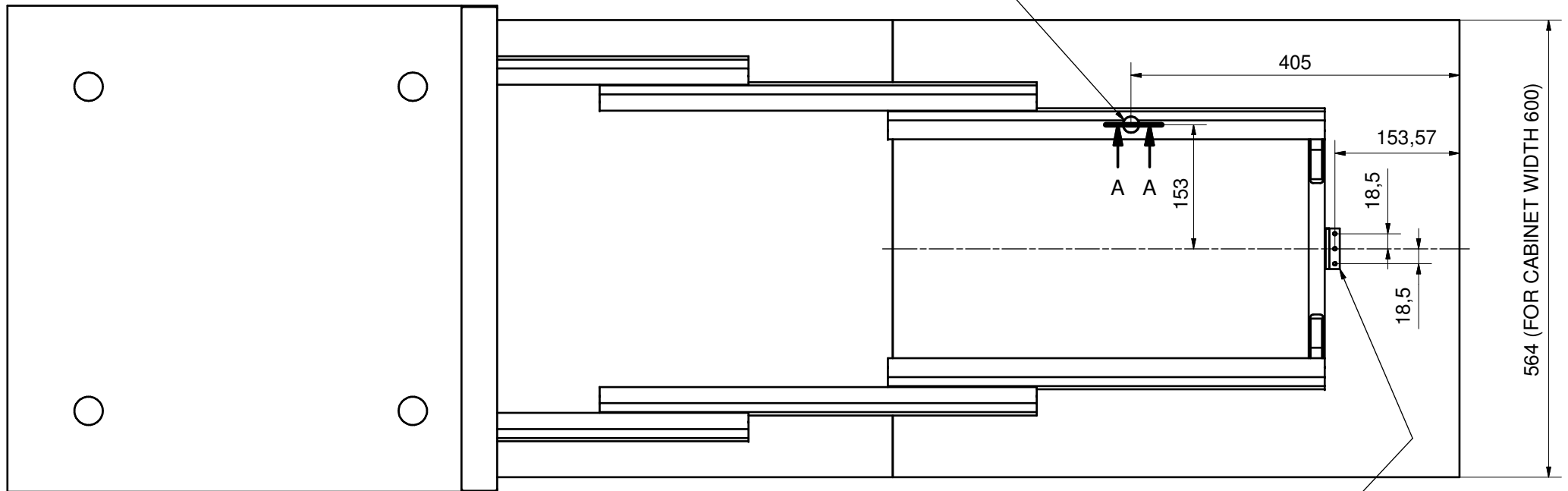
THE MECHANISM IS SUPPLIED WITH HINGE ALREADY MOUNTED ON THE HORIZONTAL BAR AND A STOPPER INSERTED IN ONE SLIDE AND A STRIKER.

A-A (1 : 5)



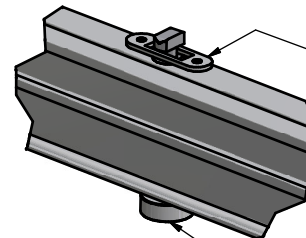
STOPPER CENTER POSITION

2,5 EMBEDDING FOR THE STRIKER



HINGE

INDICATED DIMENSIONS ARE THEORETICAL ONES, TO E VERIFIED DURING THE CABINET ASSEMBLY AND ARE DEPENDENT ON THE CHOSEN CONFIGURATION (PLANES DIMENSION, HINGES USED ECC. ECC.)



STRIKER TO BE MOUNTED UNDER THE PLANE

STOPPER