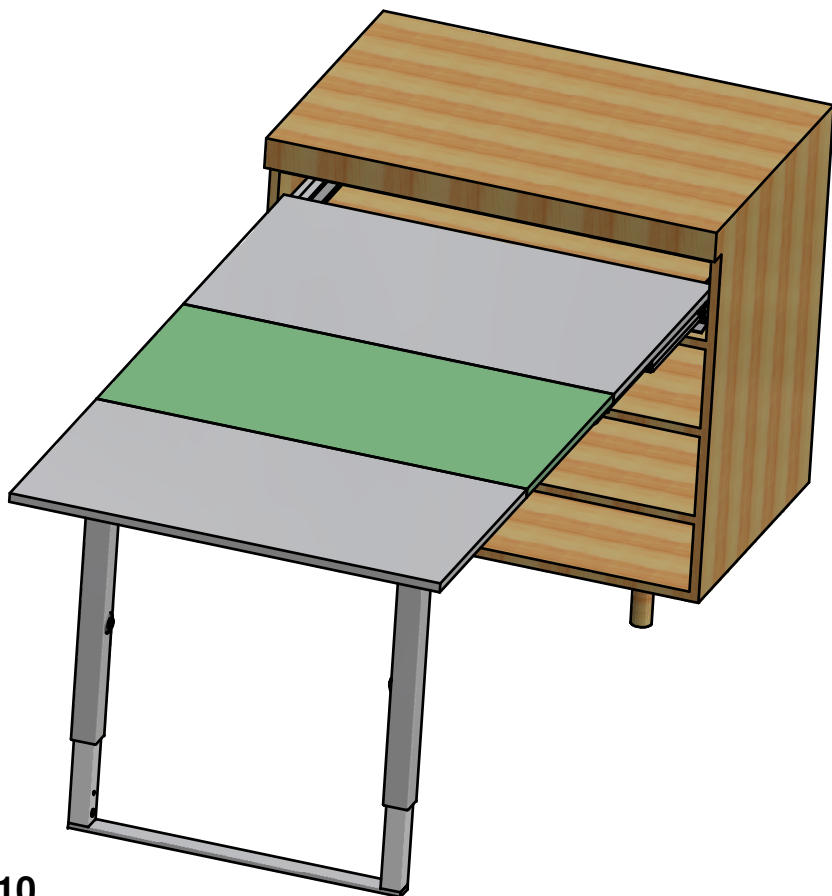


ISTRUZIONI DI MONTAGGIO

ASSEMBLY INSTRUCTIONS

MODELLI
MODELS:

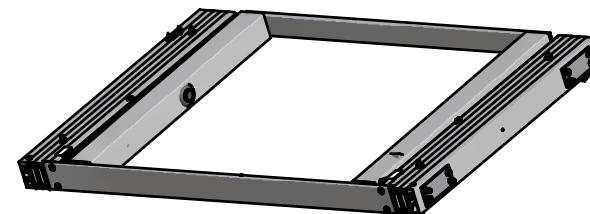
411/78.1500.22 Party per modulo mm 600 sp. 16-19
411/78.1510.22 Party per modulo mm 900 sp. 16-19
411/78.1520.22 Party per modulo mm 1200 sp. 16-19















CONTENUTO DELLA CONFEZIONE

INCLUDED IN THE PACKAGING

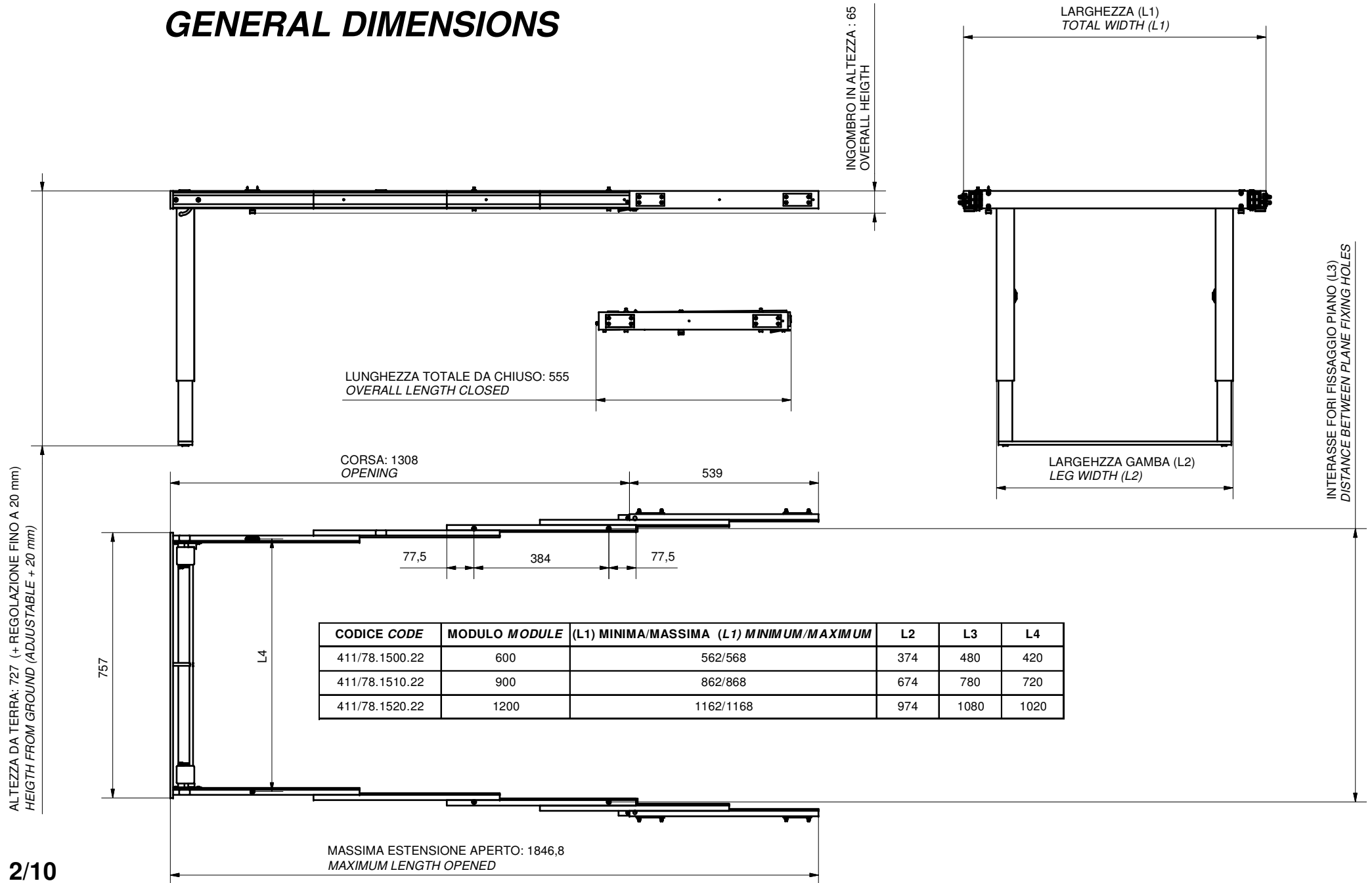
MECCANISMO PREASSEMBLATO
PRE ASSEMBLED MECHANISM



SACCHETTO ACCESSORI
ACCESSORIES

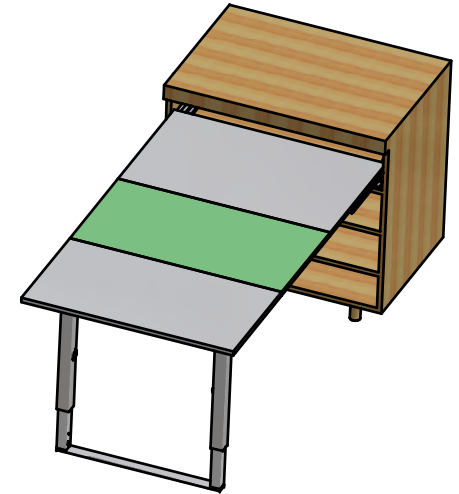
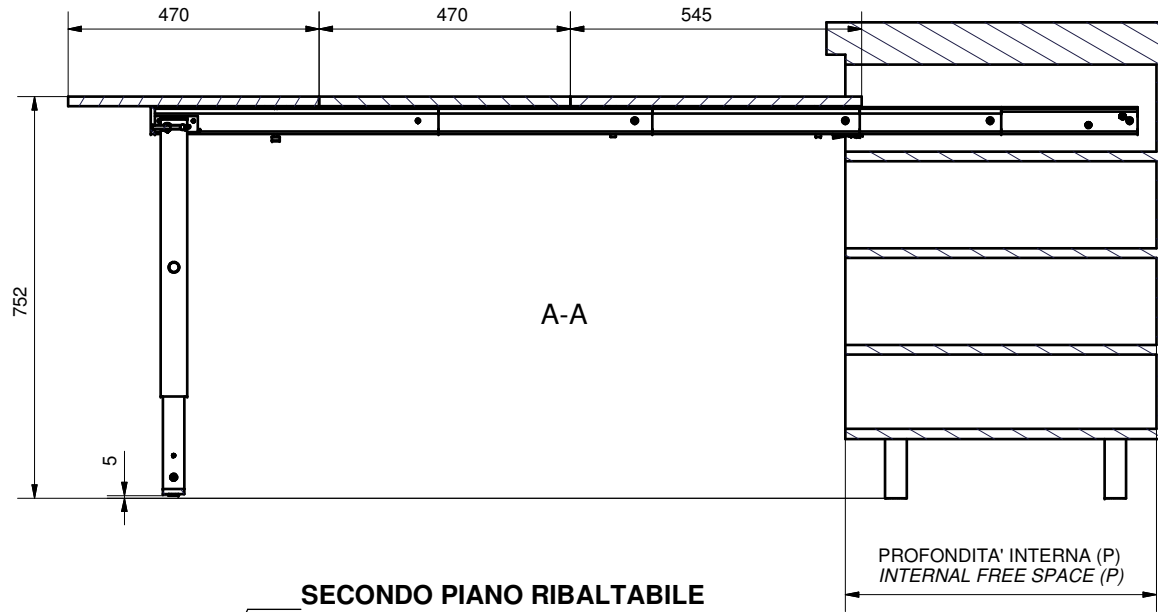
-  3.5026871.02 Distanziale per spalla - Side spacer (x 12)
-  2.5512481.02 Chiave esa. da 5 - 5 Socked wrench (x 1)
-  2.553061.02 Chiave esa. da 4 - 4 Socked wrench (x 1)
-  2.6520171.02 Chiave esa. da 3- 3 Socked wrench (x 1)
-  2.6531391.02 Vite TCCE M6x12 - Socked head cap screws M6x12 (x 8)
-  2.6525511.02 Vite TCCE M6x60 - Socked head cap screw M6x60 (x 4)
-  2.6022082.01 Bussola in ottone mm 12x8 - 12x8 mm M6 Brass bush (x 12)
-  2.5013972.01 R Riscontro per gancio piani - Striker for plane hook (x 2)
-  2.6513041.02 Vite TPS truc. 3,5x14 - Tapered wood screw 3,5x14 (x 4)
-  2.6522497.01 Feltrino adesivo - Adhesive felt (x4)
-  2.653041.02 Rondella 12x2 - Washer 12x2 (x4)
-  Vite TCBCE M5x10 ISO 7380 - M5x10 ISO 7380 screw (x8)

DIMENSIONI DI MASSIMA GENERAL DIMENSIONS



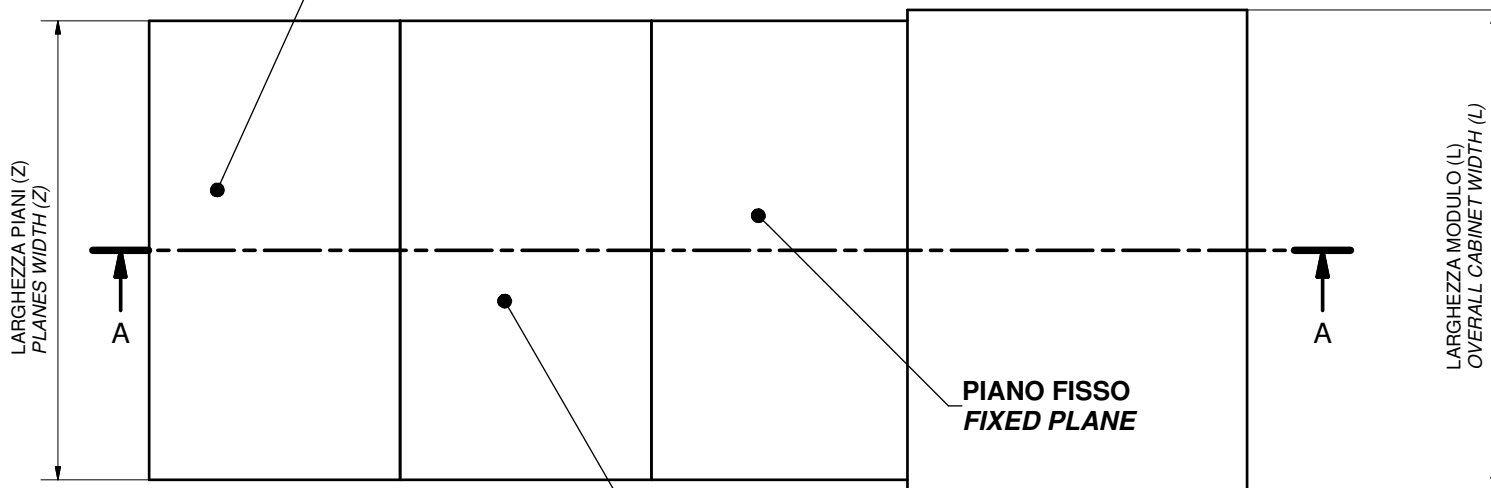
DIMENSIONI GENERALI MOBILE

GENERAL CABINET DIMENSIONS



DIMENSIONE - DIMENSION	SIMBOLO - SYMBOL	
LUCE VERTICALE - VERTICAL FREE SPACE	H	MIN: 65 + S x 3
SPESSORE PIANI - PLANES THICKNESS	S	
PROFONDITA' INTERNA - INTERNAL FREE SPACE	P	MIN: 555
LARGHEZZA PIANI - PLANES WIDTH	Z	L - S x 2 - 3
LARGHEZZA MODULO - CABINET WIDTH	L	

SECONDO PIANO RIBALTABILE
SECOND TILTING PLANE

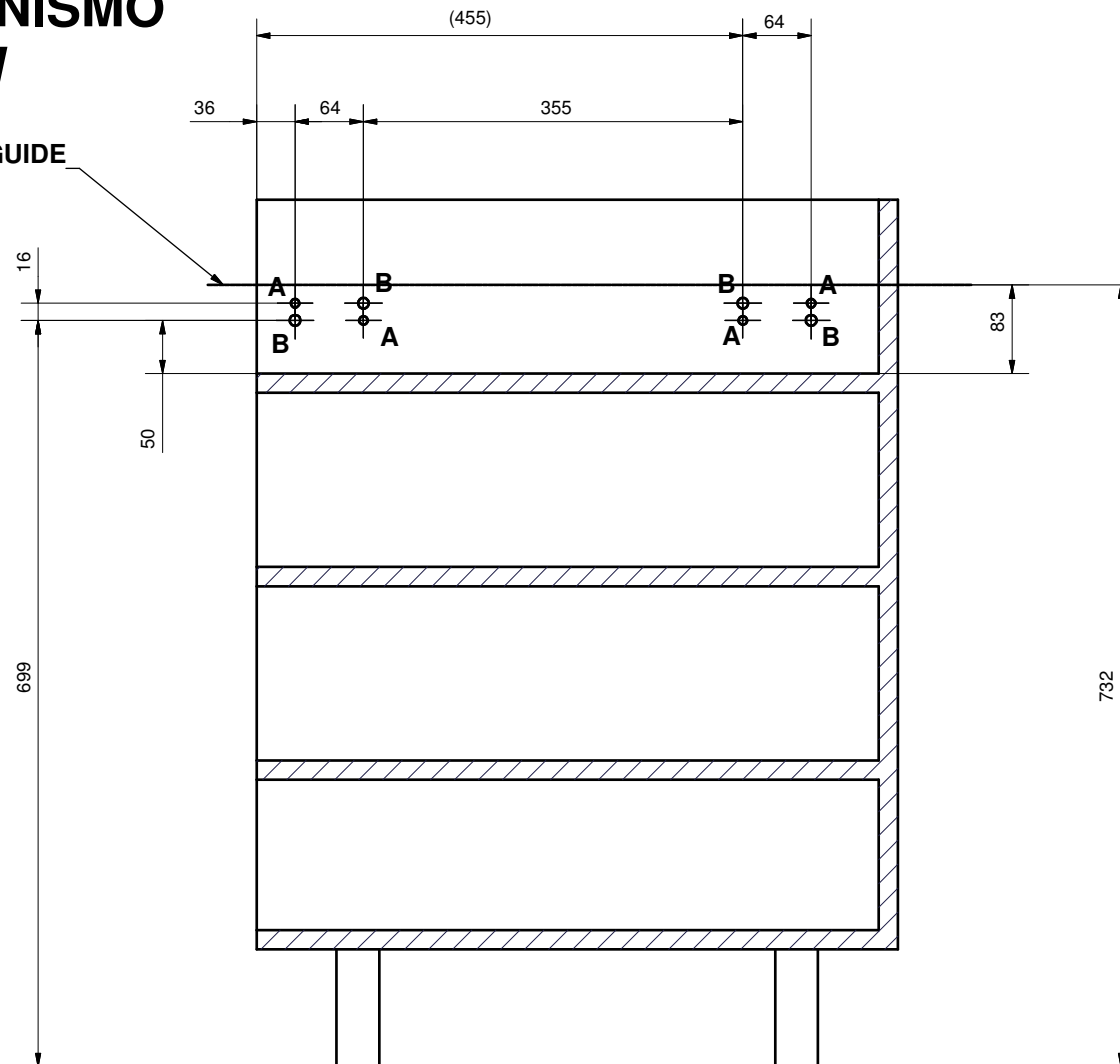
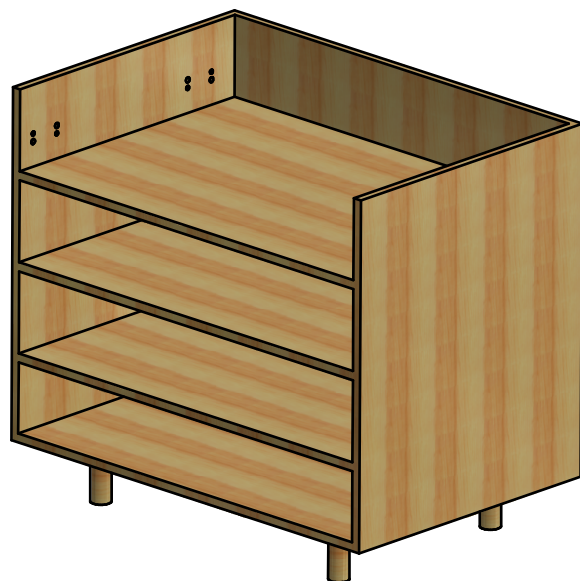


PIANO FISSO
FIXED PLANE

PRIMO PIANO RIBALTABILE
FIRST TILTING PLANE

POSIZIONE FORI FISSAGGIO MECANISMO HOLES FOR MECHANISM POSITION

POSIZIONE LATO SUPERIORE GUIDE
TOP OF THE SLIDES



LA QUOTA INDICATA DI 50 mm, LASCIA UNO SPAZIO
TRA LATO INFERIORE GUIDE E PIANETTO SOTTOSTANTE DI CIRCA 15 mm

*THE INDICATED 50 mm DIMENSION IS TO ALLOW
A FREE SPACE BETWEEN THE BOTTOM OF THE SLIDES
AND THE PLANE OF 15 mm*

A: FORI \varnothing 8 PER BUSSOLE M6

\varnothing 8 HOLES FOR M6 BUSHES

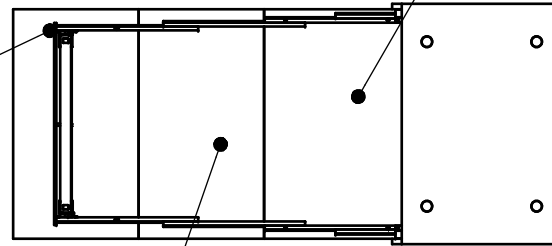
B: FORI \varnothing 10 PER TESTA VITE M5

\varnothing 10 HOLES FOR M5 SCREW HEAD

DIMENSIONI PIANETTI PLANES DIMENSIONS

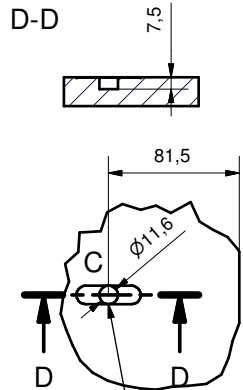
PIANO FISSO
FIXED PLANE

SECONDO PIANO RIBALTABILE
SECOND TILTING PLANE

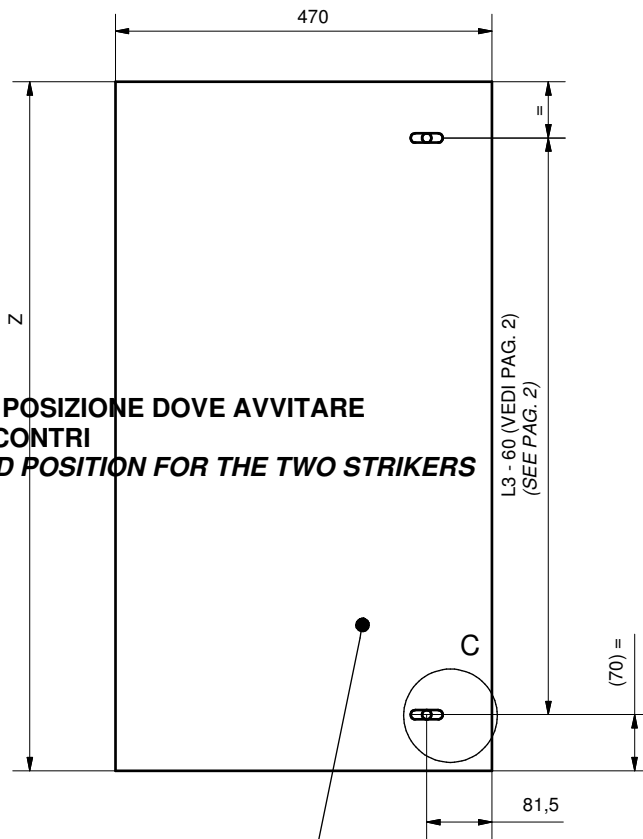


PRIMO PIANO RIBALTABILE
FIRST TILTING PLANE

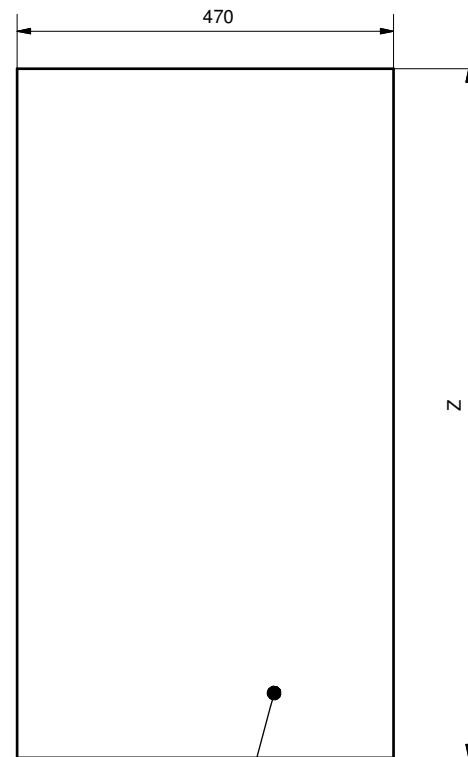
VISTA DAL BASSO
BOTTOM VIEW



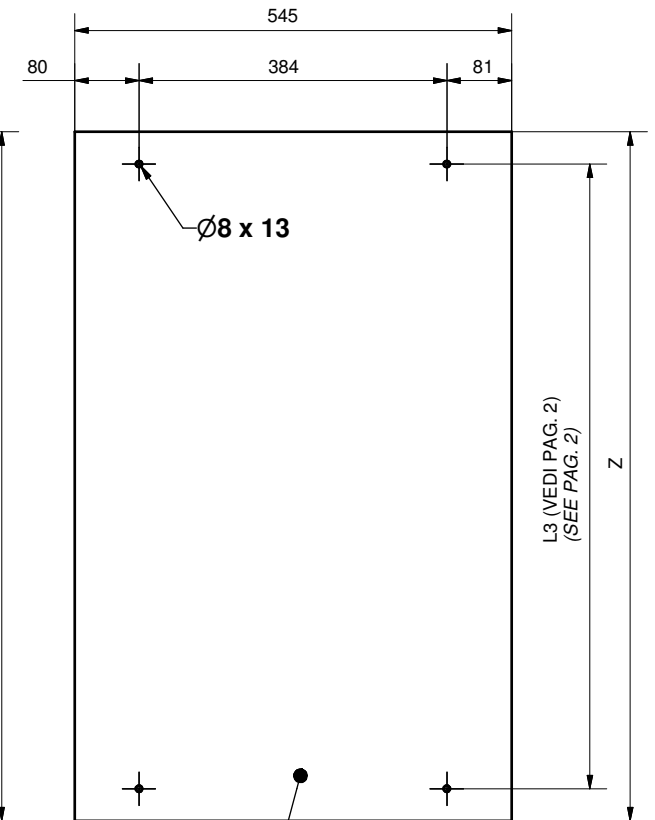
INDICATA POSIZIONE DOVE AVVITARE
I DUE RISCONTRI
INDICATED POSITION FOR THE TWO STRIKERS



SECONDO PIANO RIBALTABILE
SECOND TILTING PLANE



PRIMO PIANO RIBALTABILE
FIRST TILTING PLANE



PIANO FISSO
FIXED PLANE

PREPARAZIONE DEL MOBILE

CABINET PREPARATION



2.6022082.01 Bussola in ottone 12x8 M6 (x 8)
12x8 M6 Brass bush (x8)

Inserire le bussole M6 nei fori praticati sulle spalle del mobile
Insert te M6 Bushes in cabinet walls holes

RIPETERE L'OPERAZIONE SULL'ALTRO LATO DEL MOBILE
REPEAT OPERATION ON THE OTHER CABINET SIDE



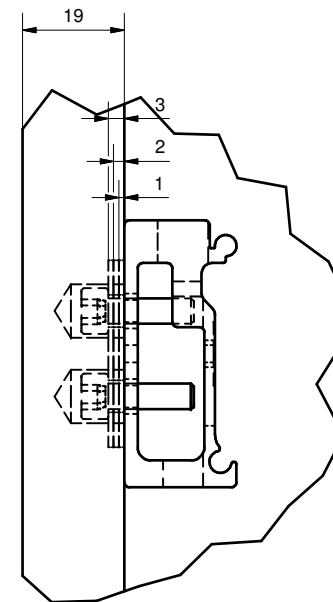
3.5026871.02 Distanziale per spalla - Side spacer (x 12)



Vite TCBCE M5x10 ISO 7380 - M5x10 ISO 7380 screw (x8)



2.6520171.02 Chiave esa. da 3- 3 Socked wrench (x 1)



IL MECCANISMO E' DIMENSIONATO PER ESSERE MONTATO SENZA SPESSORI SU □IN UN VANO DA 900mm DI LARGHEZZA E SPALLE DA 19 mm.
PER SPALLE DI SPESSORE INFERIORE, E' POSSIBILE SPESSORARE FINO A 3 mm UTILIZZANDO LE INCLUSE PIASTRINE DISTANZIALI PER SPALLACHE VANNO FISSATE SULLE GUIDE ESTERNE UTILIZZANDO LE VITI TCCE M5x10 COME IN FIGURA

THE MECHANISM IS DIMENSIONED TO BE MOUNTED ON A 900 mm WIDTH CABINET WITH 19 mm SIDES. IT IS ALLOWED TO COMPENSATE FOR NARROWER SIDES USING THE INCLUDED SIDE SPACERS. THEY ARE TO BE FIXED ON □THE EXTERNAL SLIDES USING THE INCLUDED M5x10 SCREWS AS SHOWN IN FIGURE.

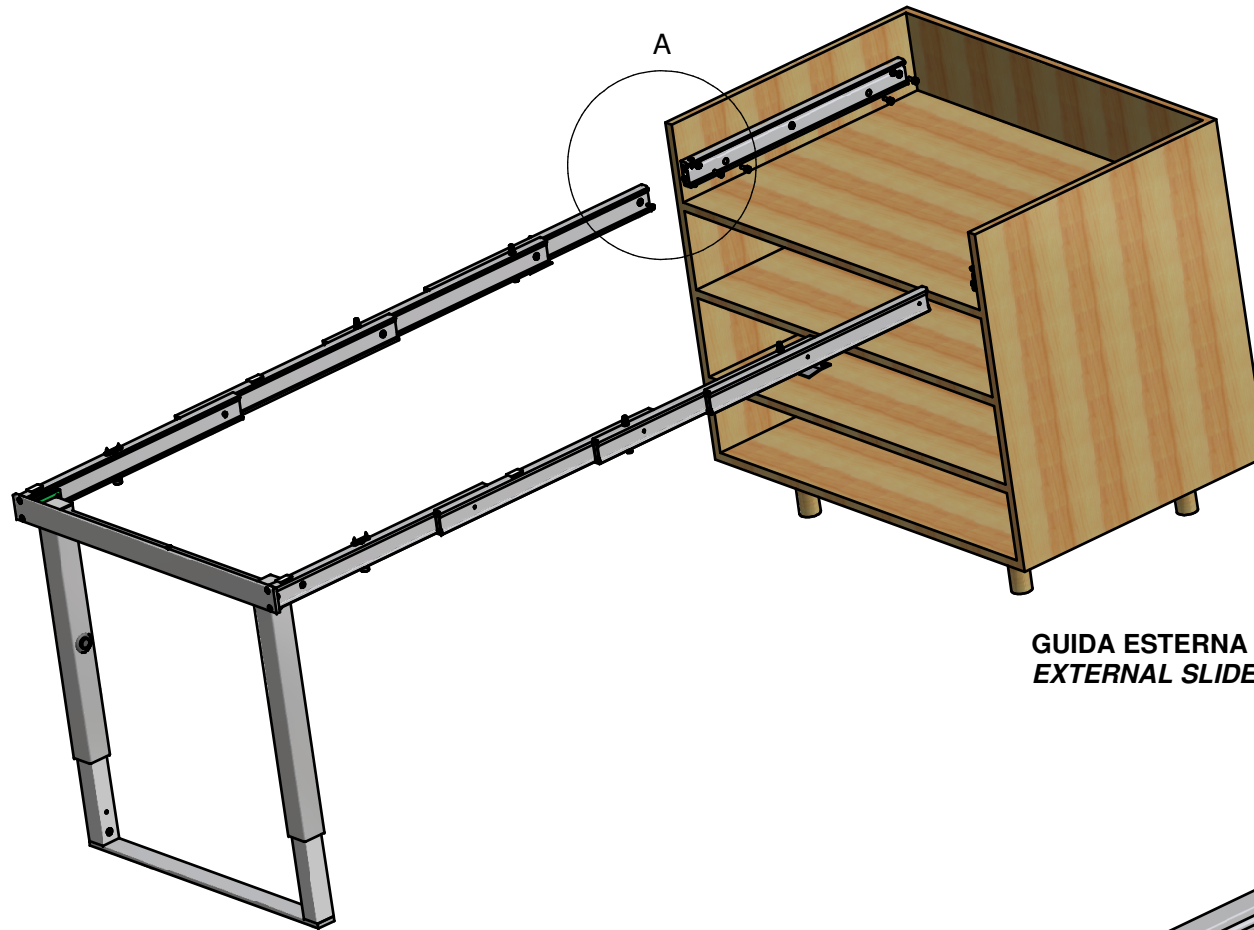
MONTAGGIO DEL MECCANISMO SUL MOBILE

MOUNTING OF THE MECHANISM ON THE CABINET

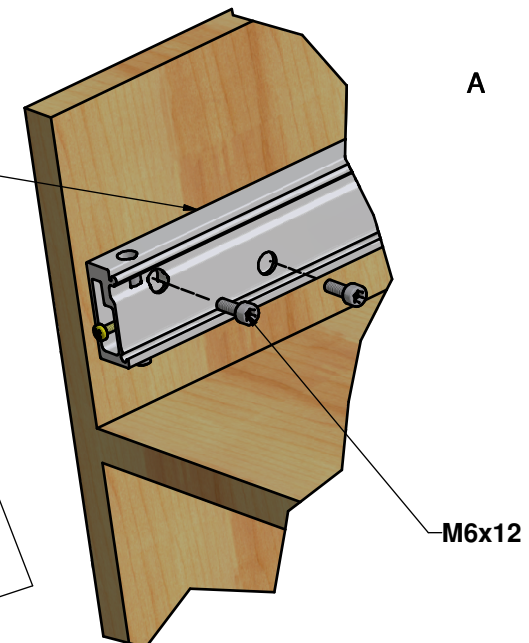
Per montare il meccanismo bisogna prima sfilarne le due guide più esterne. Per farlo svitare la vite posta alla fine delle seconde guide e sfilare da dietro le guide esterne. A questo punto le guide esterne si fissano alla spalla del mobile utilizzando le incluse viti TCCE M6x12.

Per completare l'operazione, infilare ora il meccanismo sulle guide esterne e serrare le due guide prima svitate.

To mount the mechanism on the cabinet, it is necessary first to disassemble the two external slides. To do this, unscrews the two screws in the rear of the second element. Now fix the external slides to the cabinet sides using the included M6x12 screws. Last, insert again the mechanism on the external slides and thighten the two indicated screws.



GUIDA ESTERNA
EXTERNAL SLIDE



M6x12

VITE DA ALLENTARE
SCREW TO BE UNSCREWED



2.6531391.02 Vite TCCE M6x12 (x 8)
Socket head cap screw M6x12 (x 8)



2.5512481.02 Chiave esagonale da 5
n°5 Socket wrench

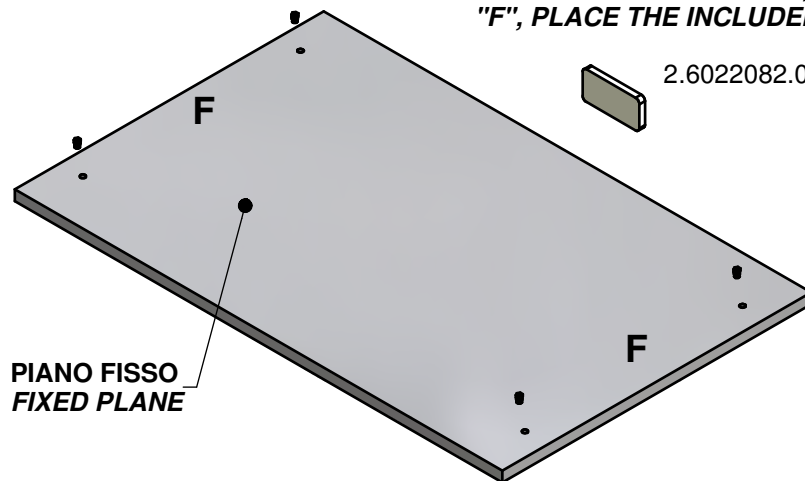
PREPARAZIONE E FISSAGGIO DEI PIANI

PLANES ASSEMBLY

SOTTO LE PROLUNGHE, NEI PUNTI INDICATI CON "F" APPORRE FELTRINI SI SPESSORAMENTO
UNDER THE EXTENSIONS, WHERE INDICATED WITH "F", PLACE THE INCLUDED FELTS

SECONDO PIANO RIBALTABILE
SECOND TILTING PLANE

PIANO FISSO
FIXED PLANE

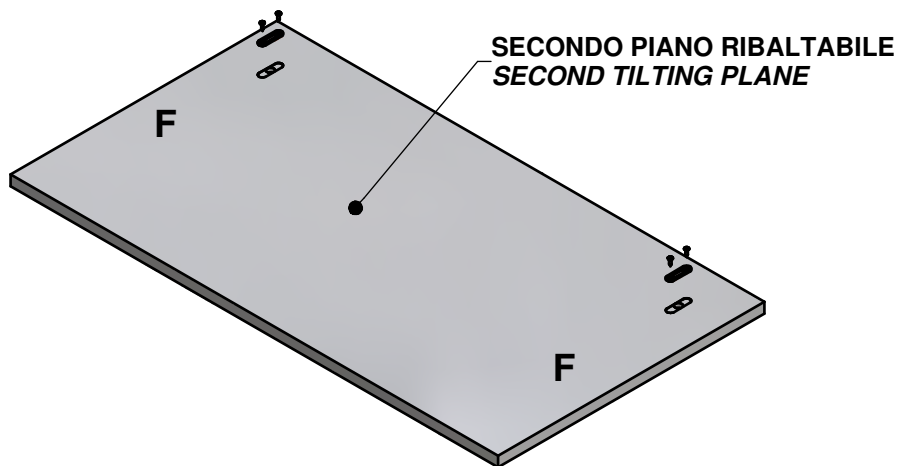


2.6022082.01 Bussola in ottone m 12x8 (x 4)
12x8 M6 Brass bush

PIANO FISSO
FIXED PLANE



2.6022082.01 Bussola in ottone m 12x8 (x 4)
12x8 M6 Brass bush



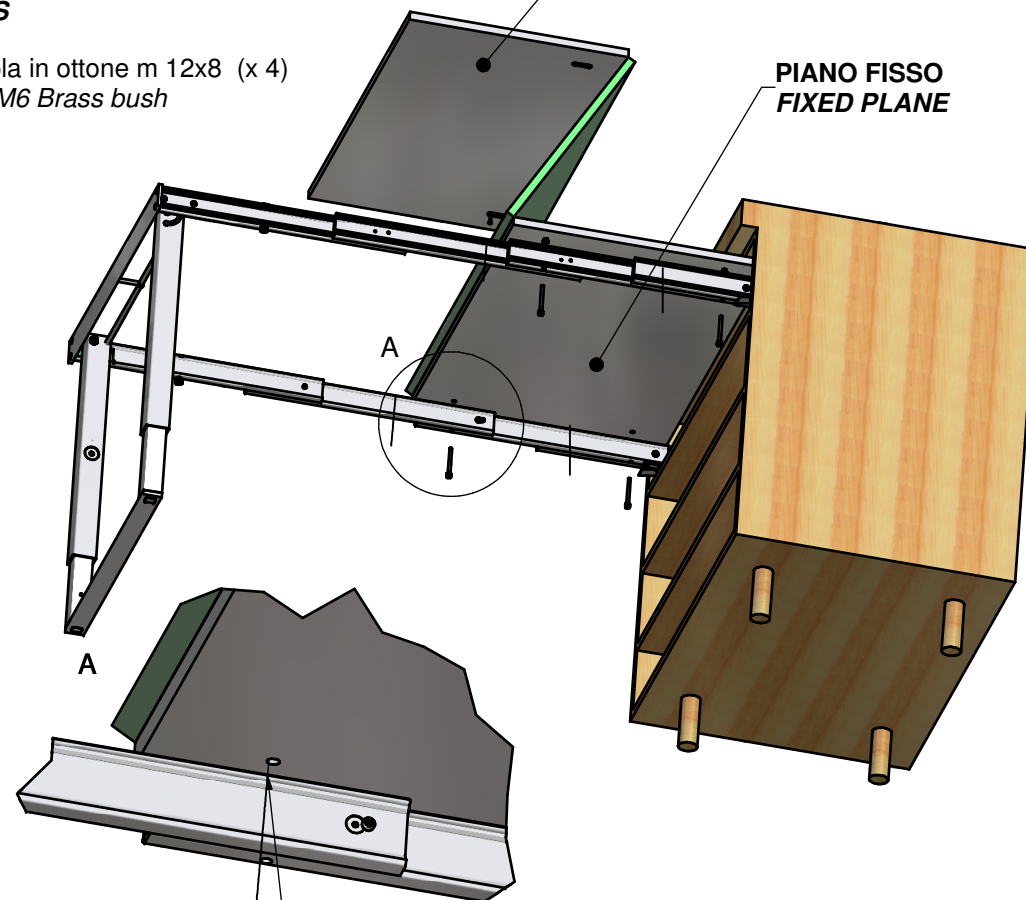
SECONDO PIANO RIBALTABILE
SECOND TILTING PLANE



2.5013972.01 Riscontro per gancio piani (x 2)
Striker for plane hook



2.6513041.02 Vite TPS truc. 3,5 x 14 (x 4)
Tapered wood screw 3,5x14



Tra piano e guida interporre le rondelle 12x2
Between plane and slides, insert the included 12x2 washers



2.6525511.02 Vite TCCE M6x60 (x 4)
Socketed head cap screw M6x60



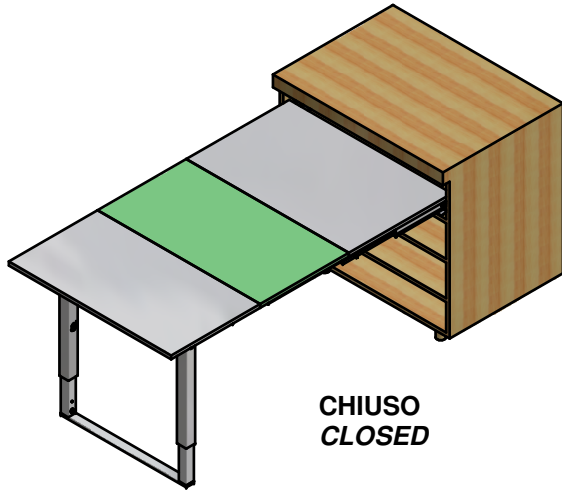
2.653041.02 Rondella 12x2 (x 4)
Washer 12x2 (x4)



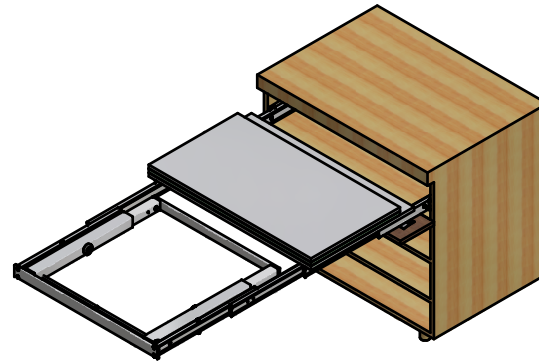
2.5512481.02 Chiave esagonale da 5
n°5 Socketed wrench

SEQUENZA DI FUNZIONAMENTO

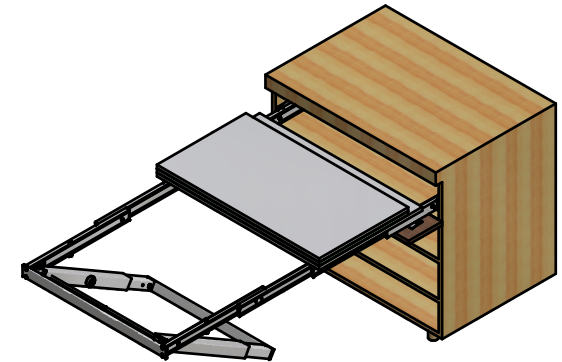
FUNCTIONING SEQUENCE



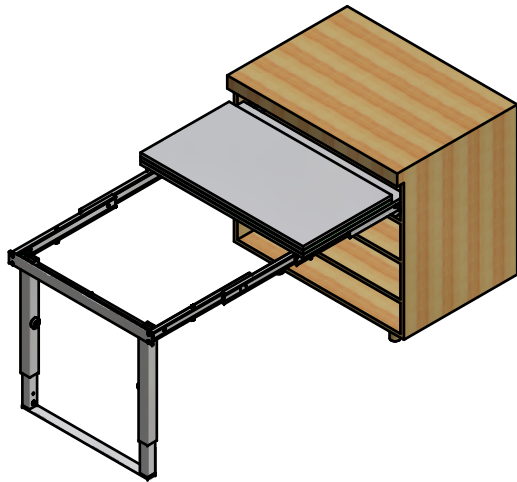
CHIUSO
CLOSED



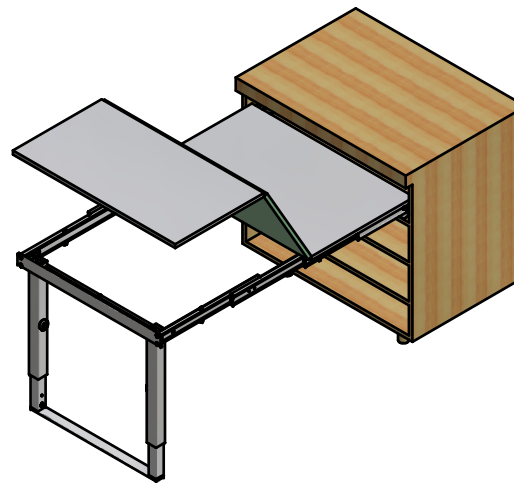
APERTURA DELLE GUIDE
SLIDES OPENING



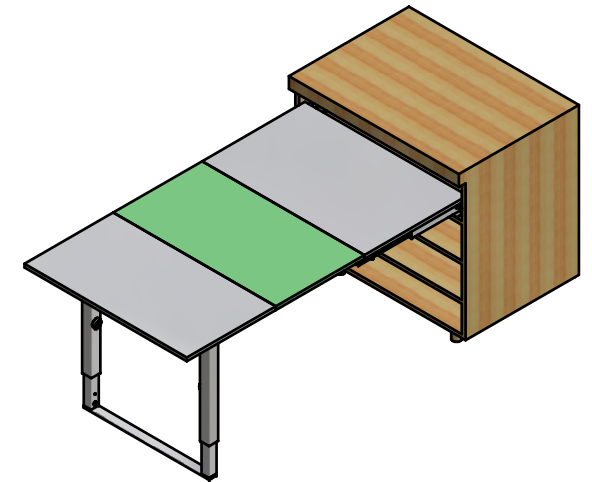
SBLOCCO E ROTAZIONE DELLA GAMBA
LEG RELEASE AND ROTATION



ESTENSIONE E BLOCCO DELLA GAMBA
LEG EXTENTION AND LOCK



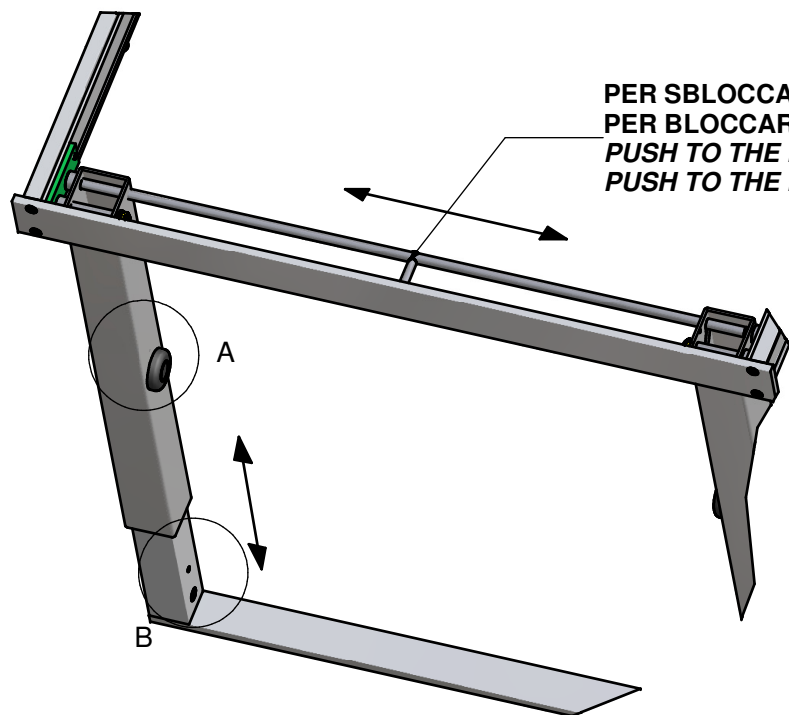
APERTURA DEI PIANI
PLANES OPENING



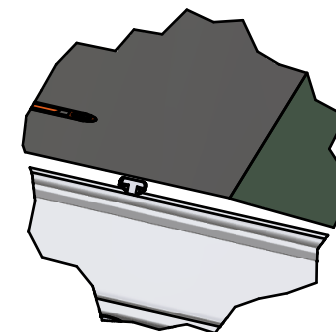
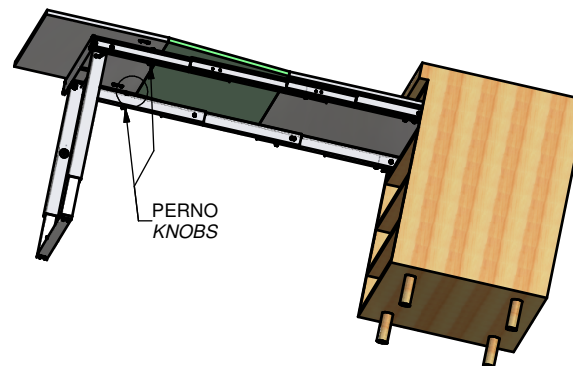
APERTO
OPENED

COME AZIONARE CORRETTAMENTE IL MECCANISMO

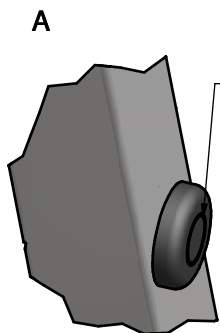
HOW TO PROPERLY MOVE THE MECHANISM



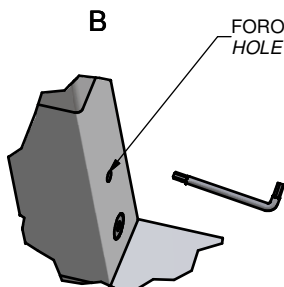
PER SBLOCCARE ROTAZIONE GAMBA □ SPINGERE VERSO DESTRA IL TONDINO
 PER BLOCCARLA SPINGERE VERSO SINISTRA
 PUSH TO THE RIGHT TO UNLOCK THE LEG ROTATION
 PUSH TO THE LEFT TO LOCK IT



PER BLOCCARE IN POSIZIONE APERTA L'ULTIMO PIANETTO RUOTARE IL PERNO
 TO LOCK THE LAST PLANE, TURN THE KNOB

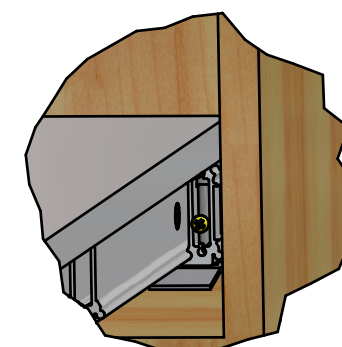
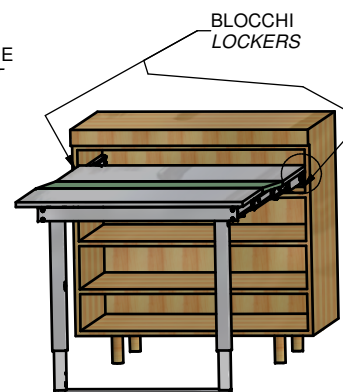


PER SBLOCCARE LA ESTENSIONE DELLA GAMBA PREMERE PULSANTE
 TO RELEASE THE LEG EXTENSION PUSH THE BUTTON



FORO PER REGOLAZIONE
 HOLE FOR ADJUSTMENT

PER REGOLARE ALTEZZA PIEDINO, USARE INCLUSA CHIAVE DA 4 INSERITA NEL FORO EVIDENZIATO IN FIGURA
 TO ADJUST THE HEIGHT, USE THE INCLUDE n°4 WRENCH INSERTED IN THE SMALL INDICATED HOLE



PER RICHIUDERE LA GUIDA, SOLLEVARE I DUE BLOCCHI UTILIZZANDO LE DUE VITI POSTE SULLA TESTA DELLE GUIDE ESTERNE
 TO CLOSE THE SLIDES, PULL UP THE TWO ARRESTER USING THE TWO CREWS ON THE FRONT OF THE EXTERNAL SLIDES