



## Tenditore alluminio Aluminium wardrobe adjusters

I TENDITORI DELLA SERIE ST700 SONO NORMALMENTE ASSEMBLATI SU ANTE LEGGERE.

CARATTERISTICHE FONDAMENTALI: COME RAPPRESENTATO SONO PREVISTI due MODI DI APPLICAZIONE, INTERNO "A", ESTERNO "B".

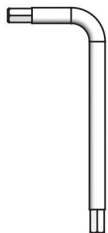
ST700 WARDROBE ADJUSTERS ARE NORMALLY USED FOR LIGHT WEIGHT DOORS

TWO ASSEMBLY POSSIBILITIES: INTERNAL "A", EXTERNAL "B".

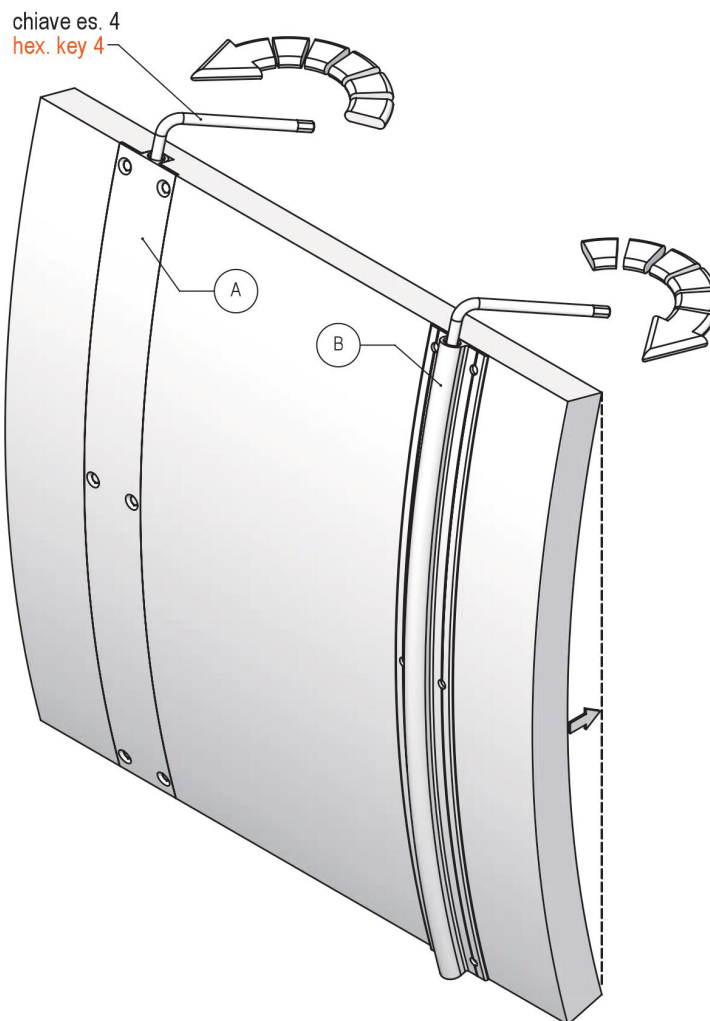
DISPONIBILI NELLE FINITURE:  
GREZZO  
ANODIZZATO NATURALE  
ALTRE FINITURE A RICHIESTA

AVAILABLE FINISHING:  
RAW  
ANODIZED  
OTHER FINISHING ON REQUEST

ACCESSORI  
ACCESSORIES



# Serie ST700 ST700 Series





# Tenditore alluminio tipo ST701

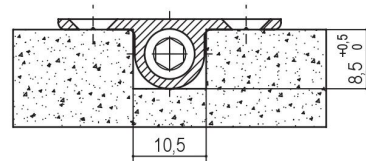
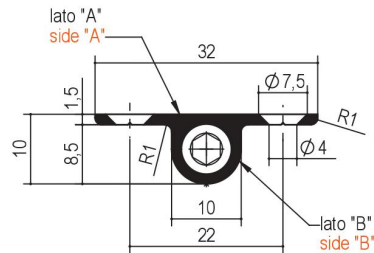
## Aluminium wardrobe adjuster ST701 type

DENSITA' LINEARE 780 g/m  
LUNGHEZZA: MIN 1200 MAX 2800

SPECIFICARE SE LA SVASATURA SI VUOLE SUL LATO "A" O LATO "B".

LINEAR DENSITY 780 g/m  
LENGTH: MIN. 1200 MAX. 2800

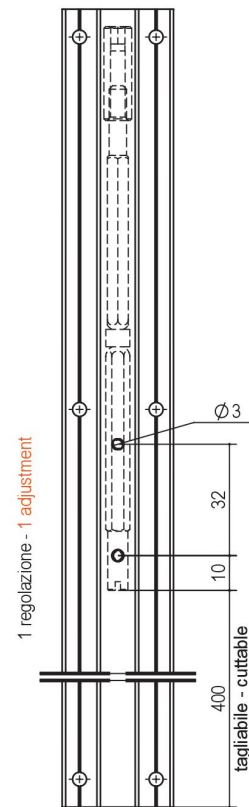
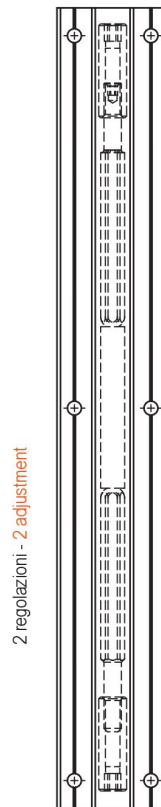
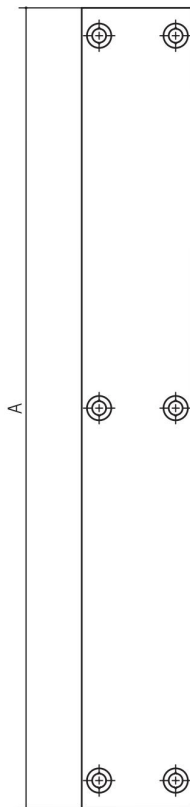
PLEASE SPECIFY IF THE GROOVING SHOULD BE ON SIDE "A" OR "B".



8 Nm



test lunghezza 2300  
length test 2300



tipo type	misura measure	finitura finishing	n° coppie fori n° couple hole	tagliabile cuttable
ST701	A a richiesta on request	00 grezzo - crude 12 anodizzato ARC - anodised altre finiture a richiesta - other finishings on request	A = 6 B = 7 C = 8 D = 9 .....	TG

es./e.g.: ST701.A.00.B  
es. codice tagliabile/e.g. cuttable code: ST701.A.00.B.TG