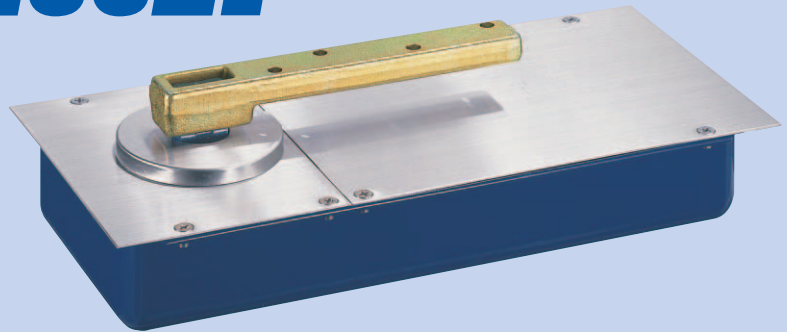


FLOOR HINGES

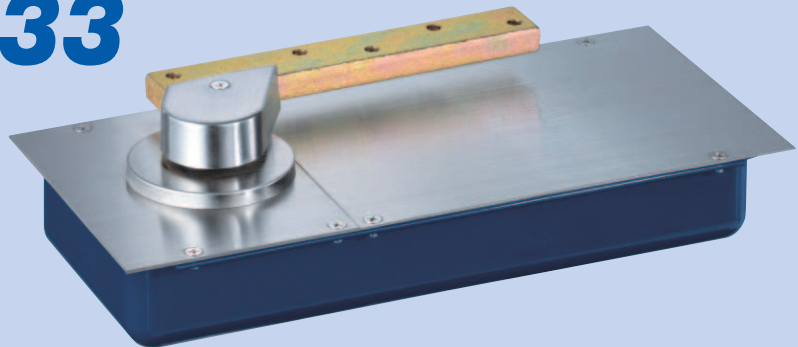
H-211ZI~233ZI

Center-Hung Floor Hinges
for Inward and Outward
Opening
(Export use model)

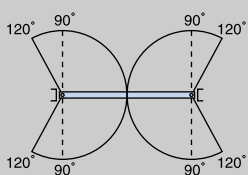


OH-211~233

Offset-Hung Floor Hinges
for One-side Opening
(Export use model)



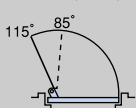
■ H-211ZI,222ZI,233ZI



Without Hold-open
Center-hung
120° inward and
outward opening

With Hold-open
Center-hung
90° hold-open
120° inward and
outward opening

■ OH-211,222,233



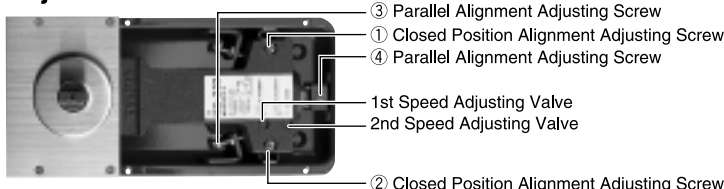
Without Hold-open
Offset-hung
115° single-action

With Hold-open
Offset-hung
85° hold-open
115° single-action

- The thickness of these floor hinges has been further reduced for installation on a thin slab.
- Two-valve function allows easy closing speed adjustment.
- The inner structure of this hinge has been specially designed to ensure durable operation.

Model Number		Applicable Door Dimensions DW×DH mm	Maximum Door Weight kg
Without Hold-open	With Hold-open		
H-211 ZI	HS-211 ZI	900×2100	70
H-222 ZI	HS-222 ZI	950×2100	105
H-233 ZI	HS-233 ZI	1050×2400	150
OH-211	OHS-211	900×2100	70
OH-222	OHS-222	950×2100	105
OH-233	OHS-233	1050×2400	150

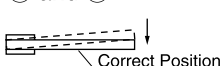
Adjustment Procedure



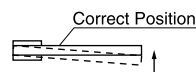
- ③ Parallel Alignment Adjusting Screw
- ① Closed Position Alignment Adjusting Screw
- ④ Parallel Alignment Adjusting Screw
- 1st Speed Adjusting Valve
- 2nd Speed Adjusting Valve
- ② Closed Position Alignment Adjusting Screw

1. Closed Position Alignment

Loosen the parallel alignment adjusting screws ③ and ④. Then, proceed to adjust with closed position alignment adjusting screws ① and ②.

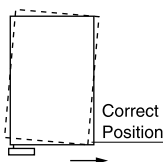


- Loosen screw ②.
- Tighten screw ①.

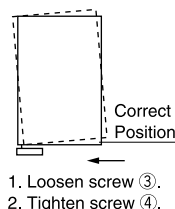


- Loosen screw ①.
- Tighten screw ②.

Parallel Alignment



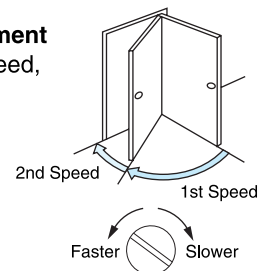
- Loosen screw ④.
- Tighten screw ③.



- Loosen screw ③.
- Tighten screw ④.

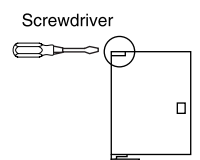
2. Closing Speed Adjustment

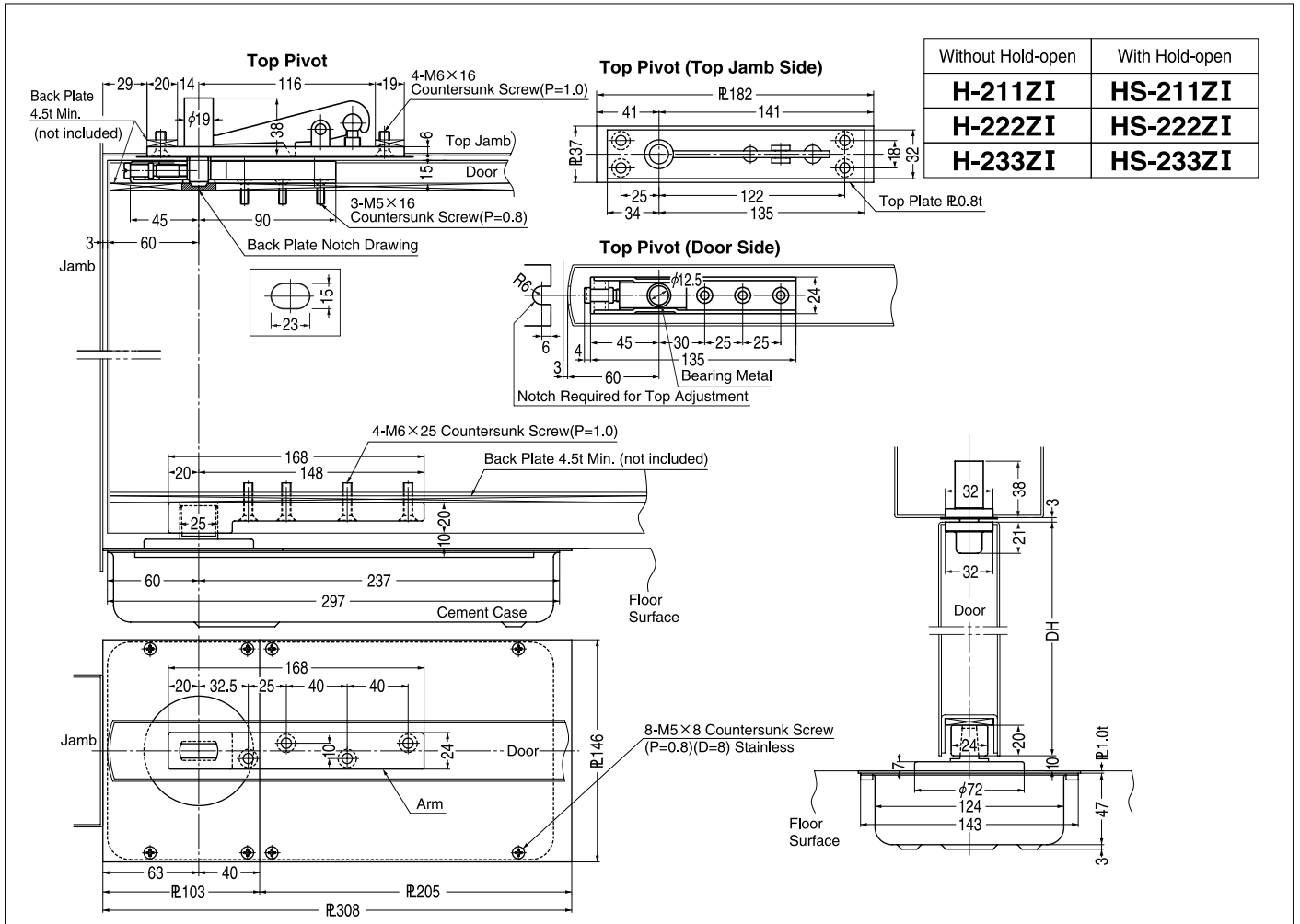
To adjust the closing speed, turn the closing speed adjusting valves to the right or left.



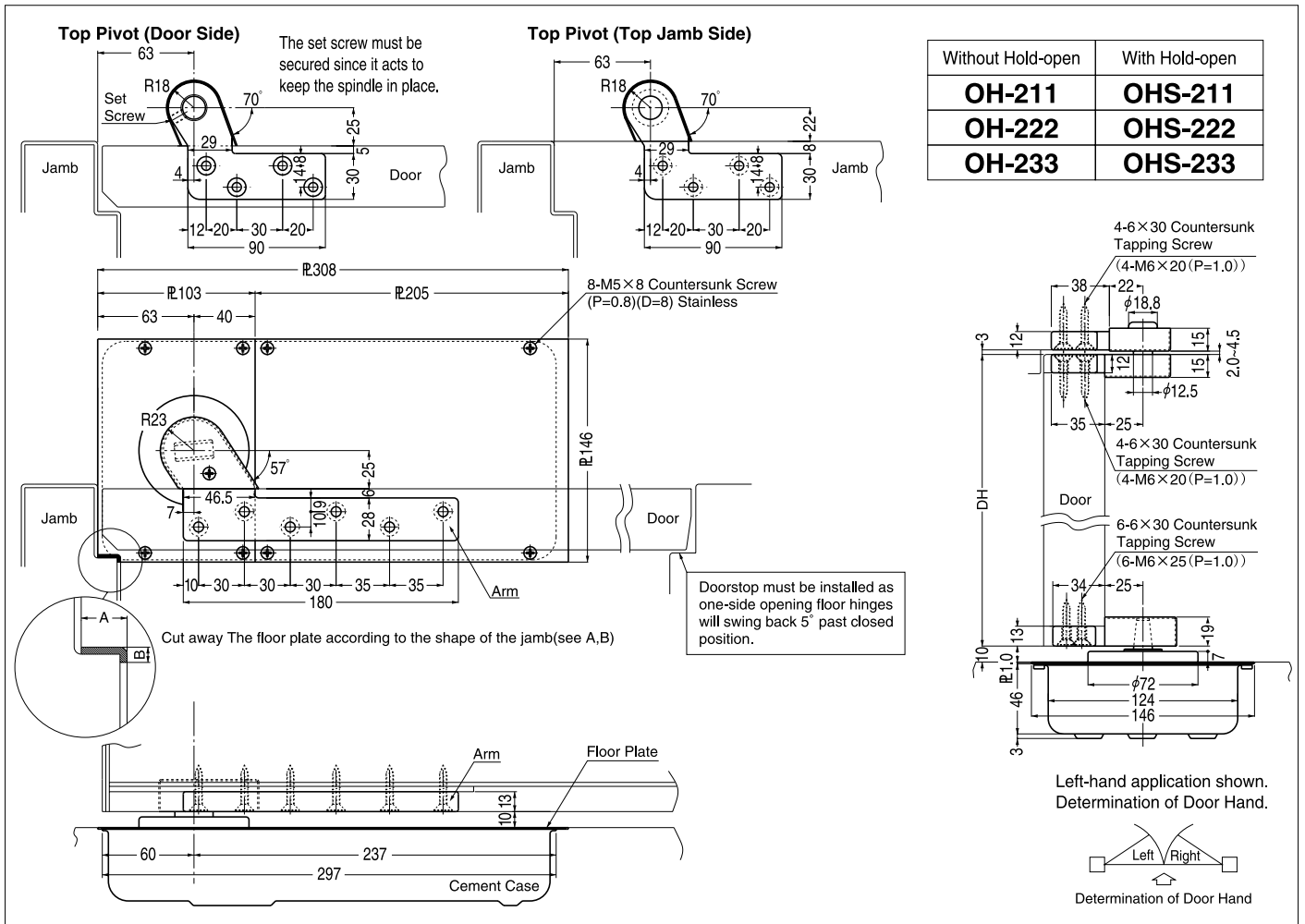
Note

Parallel alignment can be adjusted by means of the top pivot.





Without Hold-open	With Hold-open
H-211ZI	HS-211ZI
H-222ZI	HS-222ZI
H-233ZI	HS-233ZI



Without Hold-open	With Hold-open
OH-211	OHS-211
OH-222	OHS-222
OH-233	OHS-233